

LEGEND

	U.S. NUMBERED HIGHWAY		RAILROAD, ANY NUMBER OF TRACKS
	STATE NUMBERED HIGHWAY		GRADE CROSSING
	INTERSTATE HIGHWAY ROUTE		UNDERPASS, P.R. ABOVE
	PAVED ROAD		OVERPASS, R.R. BELOW
	GRAVEL ROAD		RAILROAD ON STREET
	GRAVEL & DRAINED ROAD		MILITARY AIRFIELD
	UNIMPROVED ROAD		AIRPORT WITH COMPLETE FACILITIES
	PRIMITIVE ROAD		AIRPORT WITH LIMITED FACILITIES
	PROJECTED ROAD		LANDING STRIP, PRIVATE FIELD
	COUNTY ROAD 10-NO		AIRPORT, GENERAL OUTLINE OF FIELD
	MILEAGE BETWEEN POINTS		RUNWAYS SHOWN IN POSITION
	DIVIDED HIGHWAY, 4 OR MORE LANES		ROADSIDE PARK, Picnic Grounds
	UNDIVIDED HIGHWAY, 3 OR MORE LANES		PLAYGROUNDS
	TRAFFIC CIRCLE		BATHING BEACH OR SWIMMING POOL
	HIGHWAY GRADE SEPARATION		MOTEL
	TRAFFIC INTERCHANGE		CAMP OR LODGE, Permanent with Buildings
	STATE LINE		SMALL PARK, Municipal, TP-Trailer Park
	COUNTY LINE		FOREST RANGER STATION
	CIVIL TOWNSHIP LINE		OBSERVATION OR LOOKOUT TOWER
	RURAL DEVELOPMENT AREA		CAMP SITE
	GOVERNMENT PROPERTY LINE		FISH HATCHERY
	MATCH LINE		GOLF COURSE OR COUNTRY CLUB
	COUNTY SEAT		ATHLETIC FIELD OR AMUSEMENT PARK
	TOWN CENTER		FAIRGROUNDS, RACE COURSE
	CORPORATE LIMITS		DWELLING
	CIVIL TOWNSHIP, ROAD IN PLACE		NUMBER OF DWELLINGS, CLOSELY SPACED
	INSET BOUNDARY		COMBINED BUSINESS AND DWELLING
	ELEVATION ABOVE SEA LEVEL		POST OFFICE
	MOUNTAIN RANGE, BUTTE OR MESA		POST OFFICE COMBINATIONS
	SMALL MONUMENT		SEASONAL DWELLINGS
	MARSH OR SWAMP LANDS		CHURCH OR OTHER RELIGIOUS BUILDING
	DRAINAGE DITCH		CEMETERY
	IRRIGATION DITCH		CHURCH WITH CEMETERY ADJACENT
	LAKE, RESERVOIR OR POND WITH DAM		REST HOME
	ROAD OVER DAM		HOSPITAL
	DRY LAKE SUBJECT TO FLOOD		SMALL BUSINESS
	SMALL BRIDGES, CLOSELY SPACED		INDUSTRY
	HIGHWAY BRIDGE, OVER 20 FT. IN LENGTH		SAW MILL
	GENERAL BRIDGE, LONG CROSSING		MINE SHAFT OR DRIFT
	ARCH BRIDGE		OIL OR GAS FIELD
	TRUSS BRIDGE, W-Wood, S-Steel, C-Concrete		GAUGING OR PUMPING STATION
	CONCRETE DIP OR FORD		WAREHOUSE
	FORD ROAD ESTABLISHED		DRAVEL PIT
	INTERMITTENT STREAM		QUARRY
	NARROW STREAM		SCHOOL
	DOCK PIER OR LANDING		COMMUNITY HALL OR LODGE
	NAVIGABLE STREAM WITH LOCK & DAM		DRIVE-IN THEATER
	WIDE STREAM OR RIVER		CORRECTIONAL INSTITUTION
	TRIANGULATION STATION		HIGHWAY GARAGE
			JUNK YARDS & CANS, Automobile
			B-Scrap Building Material
			D-Relief, Garbage or Trash Dump
			F-Sanitary Fill, G-Other
			SEWAGE DISPOSAL PLANT
			WATER SUPPLY STAND PIPE
			POWER PLANT
			BOOSTER STATION
			POWER SUBSTATION
			TELEVISION OR RADIO STATION
			MILITARY INSTALLATION

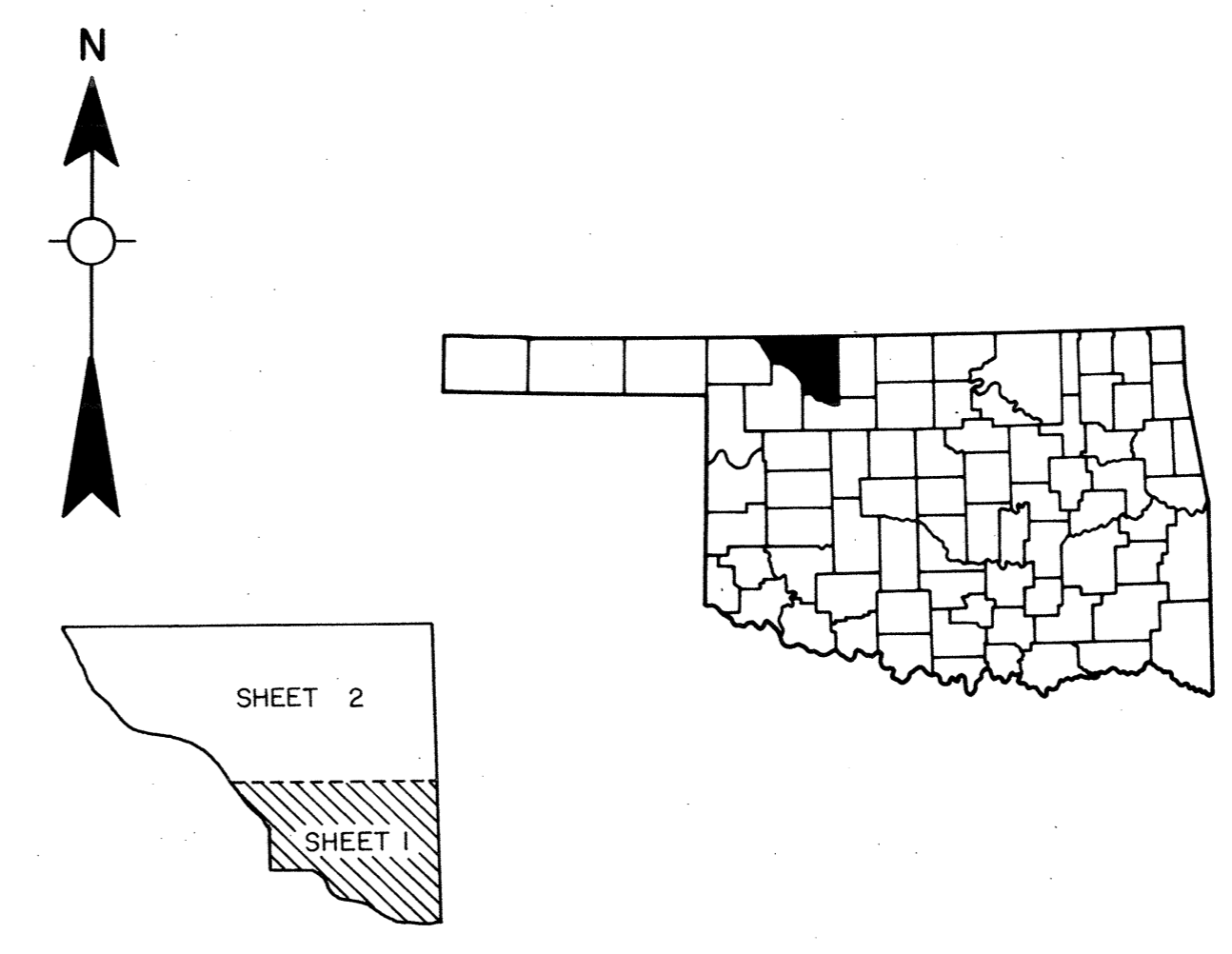
**GENERAL HIGHWAY MAP
WOODS COUNTY
OKLAHOMA**

PREPARED BY THE
**OKLAHOMA DEPARTMENT OF TRANSPORTATION
PLANNING DIVISION**

IN COOPERATION WITH THE
**FEDERAL DEPARTMENT OF TRANSPORTATION
FEDERAL HIGHWAY ADMINISTRATION**

SCALE
0 1 2 3 4 5 MILES

LAMBERT CONFORMAL CONIC PROJECTION, U.S. COAST & GEODETIC SURVEY DATA
20,000 FOOT GRID, OKLAHOMA PLANE COORDINATE SYSTEM NORTH, COLLECTION ZONE
POPULATION FIGURES BASED ON 1990 U.S. CENSUS
CO. POP. 9,103



ALL DATA CURRENT TO
DATE OF INVENTORY
AUG. 1987

ORIGINAL DRAFTING BY W.T. JULY 1988
STATE SYSTEM REVISED TO JAN. 1992

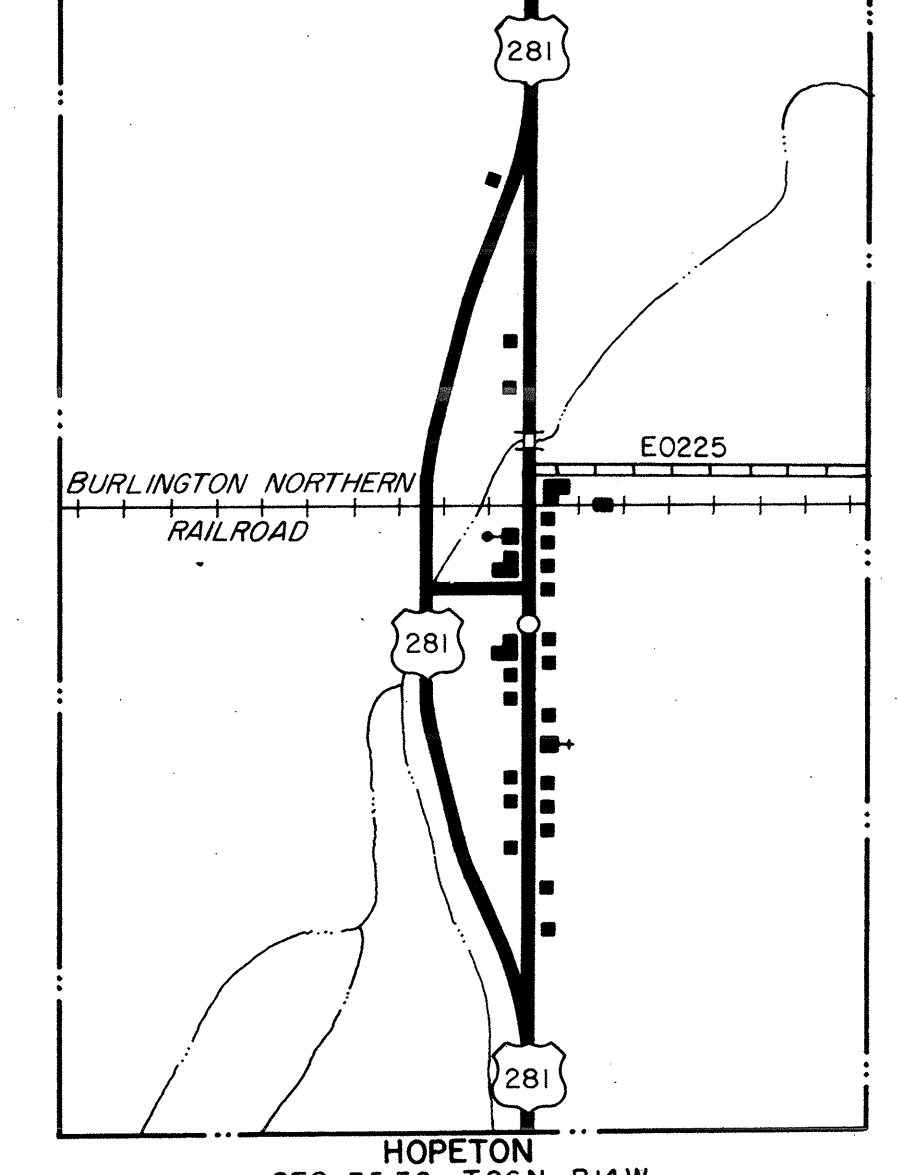
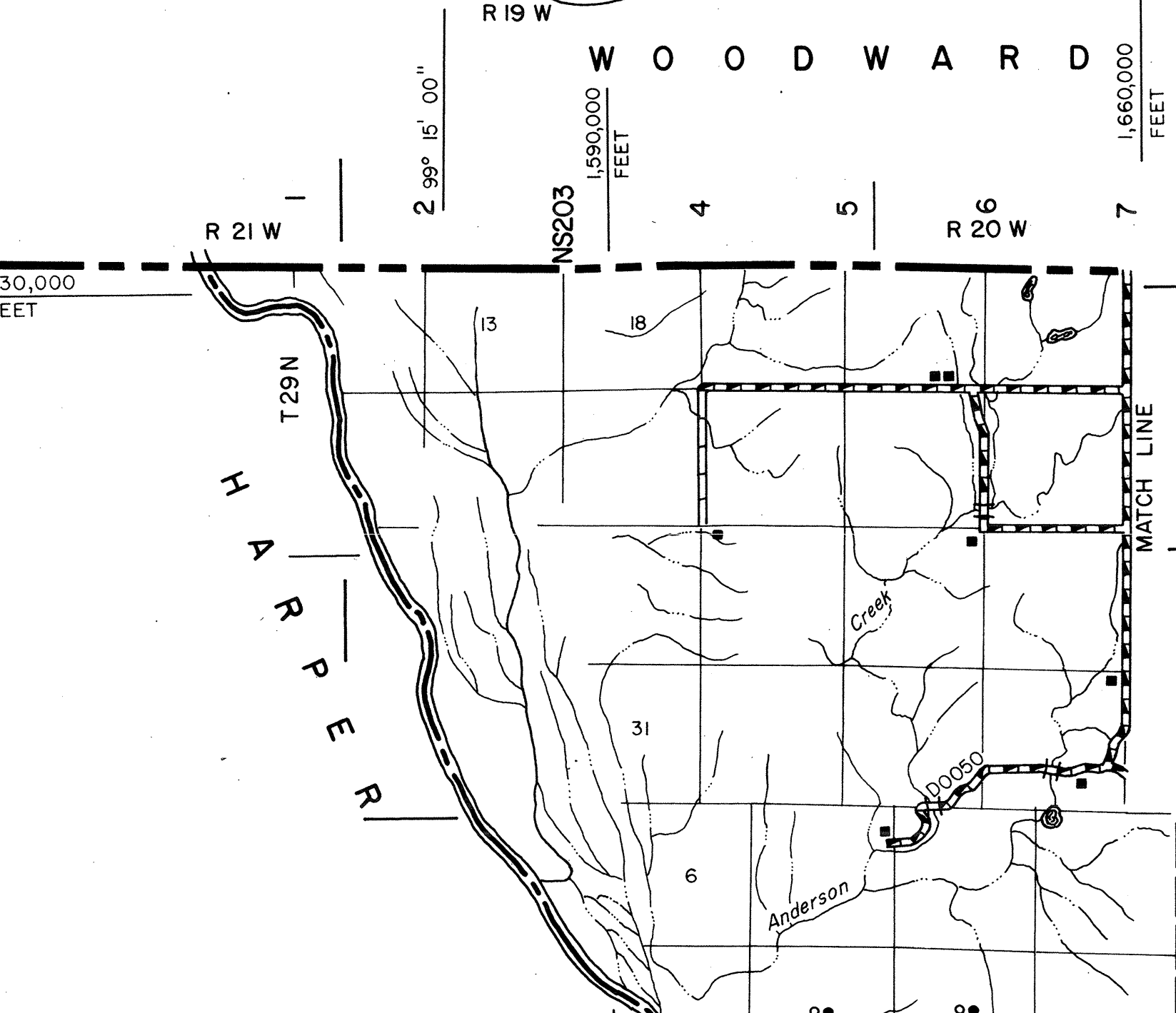
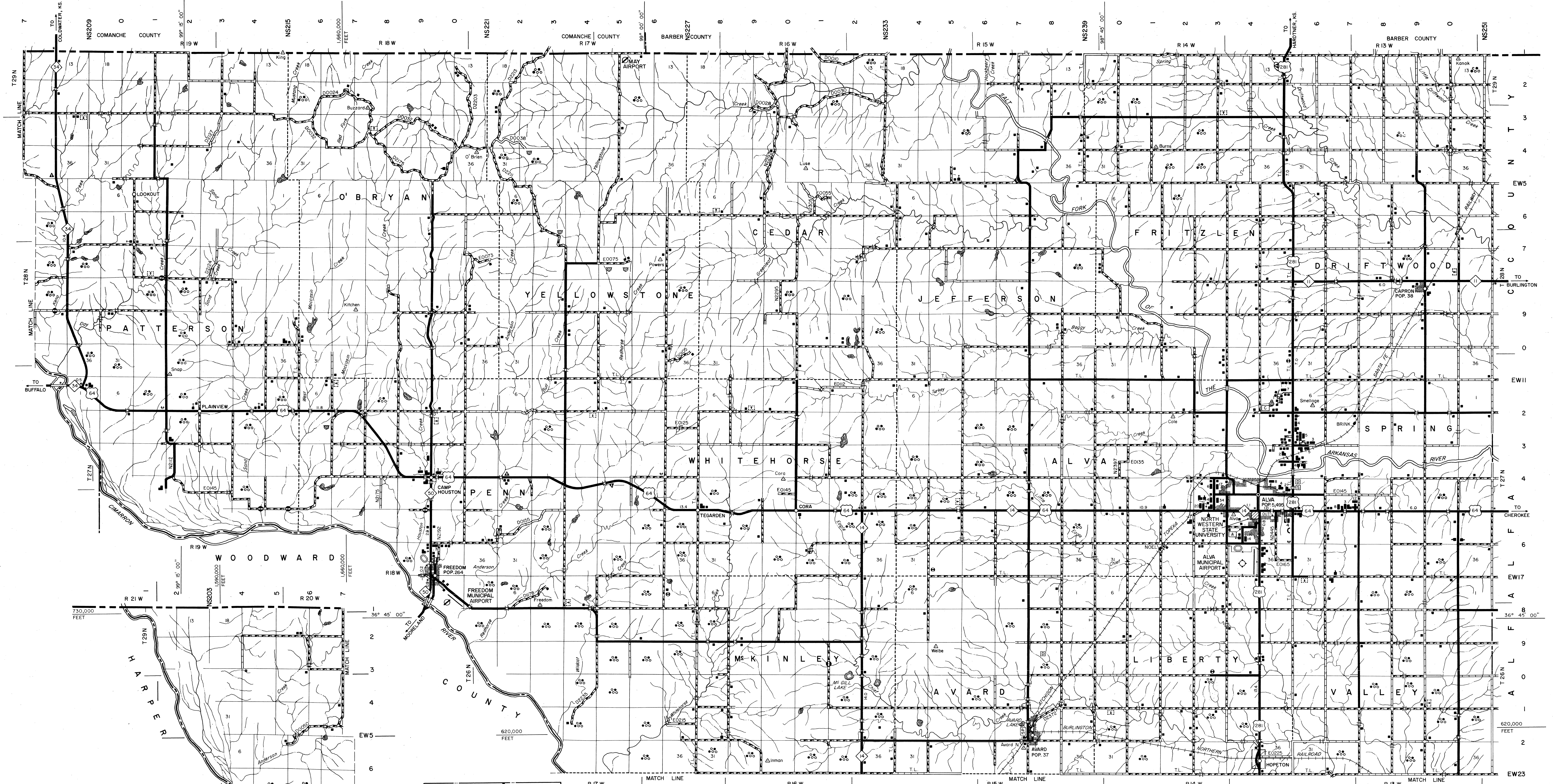
SHEET 2

This map indicates those roads known to the Department to be open to public travel. Placement of a road on the map has no relationship to maintenance responsibility by any level of government.

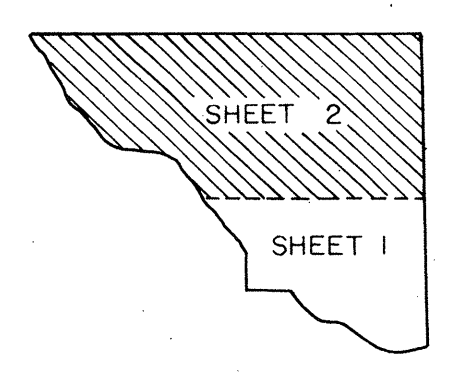
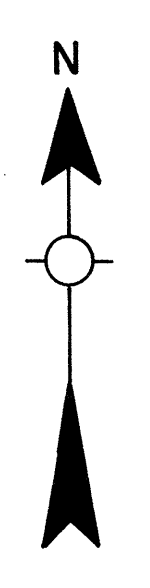
Copies of this map are available for public use at nominal cost.
Address: OKLAHOMA DEPARTMENT OF TRANSPORTATION
REPRODUCTION BRANCH Phone (405) 521-2586
200 N.E. 21st STREET
OKLAHOMA CITY, OKLAHOMA 73105

NOT FOR RESALE

S T A T E O F K A N S A S



HOPESTON
SEC. 35, 36, T26N, R14W
SCALE
0 0.1 0.2 0.3 0.4 0.5 0.6 0.7 0.8 0.9 1.0 MILE
0 1,320' 2,640' 5,280' FEET



This map indicates those roads known to the Department to be open to public travel. Placement of a road on the map has no relationship to maintenance responsibility by any level of government.
Copies of this map are available for public use at nominal cost.
Address: OKLAHOMA DEPARTMENT OF TRANSPORTATION
REPRODUCTION BRANCH Phone (405) 521-2386
200 N.E. 21st STREET
OKLAHOMA CITY, OKLAHOMA 73105

ALL RIGHTS RESERVED SHEET 2 OF 2 SHEETS

NOT FOR RESALE

GENERAL HIGHWAY MAP WOODS COUNTY OKLAHOMA