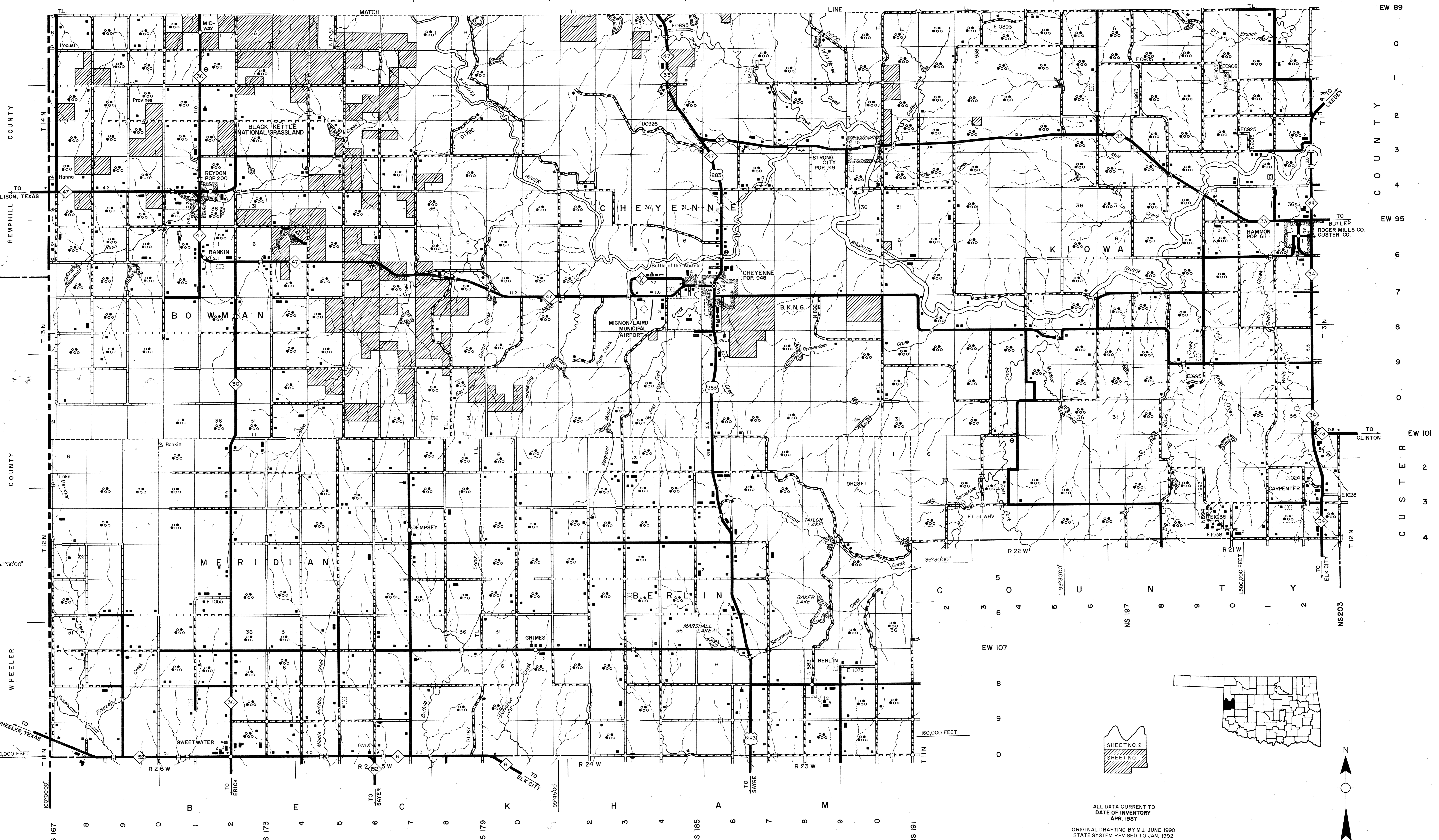


S T A T E O F T E X A S



- LEGEND**
- U.S. NUMBERED HIGHWAY
 - STATE NUMBERED HIGHWAY
 - INTERSTATE HIGHWAY ROUTE
 - PAVED ROAD
 - GRAVEL ROAD
 - GRADED & DRAINED ROAD
 - UNPAVED ROAD
 - PRIMITIVE ROAD
 - PROJECTED ROAD
 - RESIDENTIAL ROAD
 - N0001 COUNTY ROAD ID NO
 - MILEAGE BETWEEN POINTS
 - DIVIDED HIGHWAY 4 OR MORE LANES
 - INDIVIDUED HIGHWAY 2 OR MORE LANES
 - TRAFFIC CIRCLE
 - HIGHWAY GRADE SEPARATION
 - TRAFFIC INTERCHANGE
 - STATE LINE
 - COUNTY LINE
 - CIVIL TOWNSHIP LINE
 - SECTION LINE
 - RURAL DEVELOPMENT AREA
 - GOVERNMENT PROPERTY LINE
 - MATCH LINE
 - COUNTY SEAT
 - TOWN CENTER
 - CORPORATE LIMITS
 - CIVIL TOWNSHIP ROAD IN PLACE
 - INSET BOUNDARY
 - ELEVATION ABOVE SEA LEVEL
 - MOUNTAIN RANGE BUTTE OR MESA
 - SMALL MONUMENT
 - MARSH OR SWAMP LANDS
 - DRAINAGE DITCH
 - IRRIGATION DITCH
 - LAKE RESERVOIR OR POND WITH DAM
 - ROAD OVER DAM
 - DRY LAKE SUBJECT TO FLOOD
 - SMALL BRIDGES CLOSELY SPACED
 - HIGHWAY BRIDGE OVER 20 FT. IN LENGTH
 - GENERAL BRIDGE LONG CROSSING
 - ARCH BRIDGE
 - TRUSS BRIDGE W-Wood S-Steel C-Concrete
 - CONCRETE DIRT OR FORD
 - FORD ROAD ESTABLISHED
 - INTERMITTENT STREAM
 - NARROW STREAM
 - DOCK PIER OR LANDING
 - NAVIGABLE STREAM WITH LOCK & DAM
 - WIDE STREAM OR RIVER
 - TRIANGULATION STATION
 - RAILROAD ANY NUMBER OF TRACKS
 - RAILROAD WITH STATIONS INDICATED
 - GRADE CROSSING
 - UNDERPASS R.R. ABOVE
 - OVERPASS R.R. BELOW
 - RAILROAD ON STREET
 - MILITARY AIRFIELD
 - AIRPORT WITH COMPLETE FACILITIES
 - AIRPORT WITH LIMITED FACILITIES
 - LANDING STRIP PRIVATE FIELD
 - AIRPORT GENERAL OUTLINE OF FIELD
 - RUNWAYS SHOWN IN POSITION
 - ROADSIDE PARK Picnic Grounds
 - PLAYGROUND
 - CAMP OR LODGE Permanent With Buildings
 - SMALL PARK MP Municipal TP-Trailer Park
 - FOREST RANGER STATION
 - OBSERVATION OR LOOKOUT TOWER
 - CAMP SITE
 - FISH HATCHERY
 - GOLF COURSE OR COUNTRY CLUB
 - ATHLETIC FIELD OR AMUSEMENT PARK
 - FARMSIDE RACE COURSE
 - DWELLING
 - NUMBER OF DWELLINGS CLOSELY SPACED
 - COMBINED BUSINESS AND DWELLING
 - POST OFFICE
 - POST OFFICE COMBINATIONS
 - SEASONAL DWELLINGS
 - CHURCH OR OTHER RELIGIOUS BUILDING
 - CEMETERY
 - CHURCH WITH CEMETERY ADJACENT
 - REST HOME
 - HOSPITAL
 - SMALL BUSINESS
 - INDUSTRY
 - SAW MILL
 - MINE SHAFT OR DRIFT
 - OIL OR GAS FIELD
 - GALVANIZING OR PUMPING STATION
 - WAREHOUSE
 - GRAVEL PIT
 - QUARRY
 - SCHOOL
 - COMMUNITY HALL OR LODGE
 - HISTORICAL MARKER
 - DRIVE-IN THEATER
 - CORRECTIONAL INSTITUTION
 - HIGHWAY GARAGE
 - JUNK YARDS & DUMPS A-Automobile, B-Scrap Building Material, D-Household Appliances, F-Sanitary Fill, G-Other
 - WATER SUPPLY STAND PIPE
 - POWER SUBSTATION
 - ROOSTER STATION
 - POWER SUBSTATION
 - TELEVISION OR RADIO STATION
 - MILITARY INSTALLATION

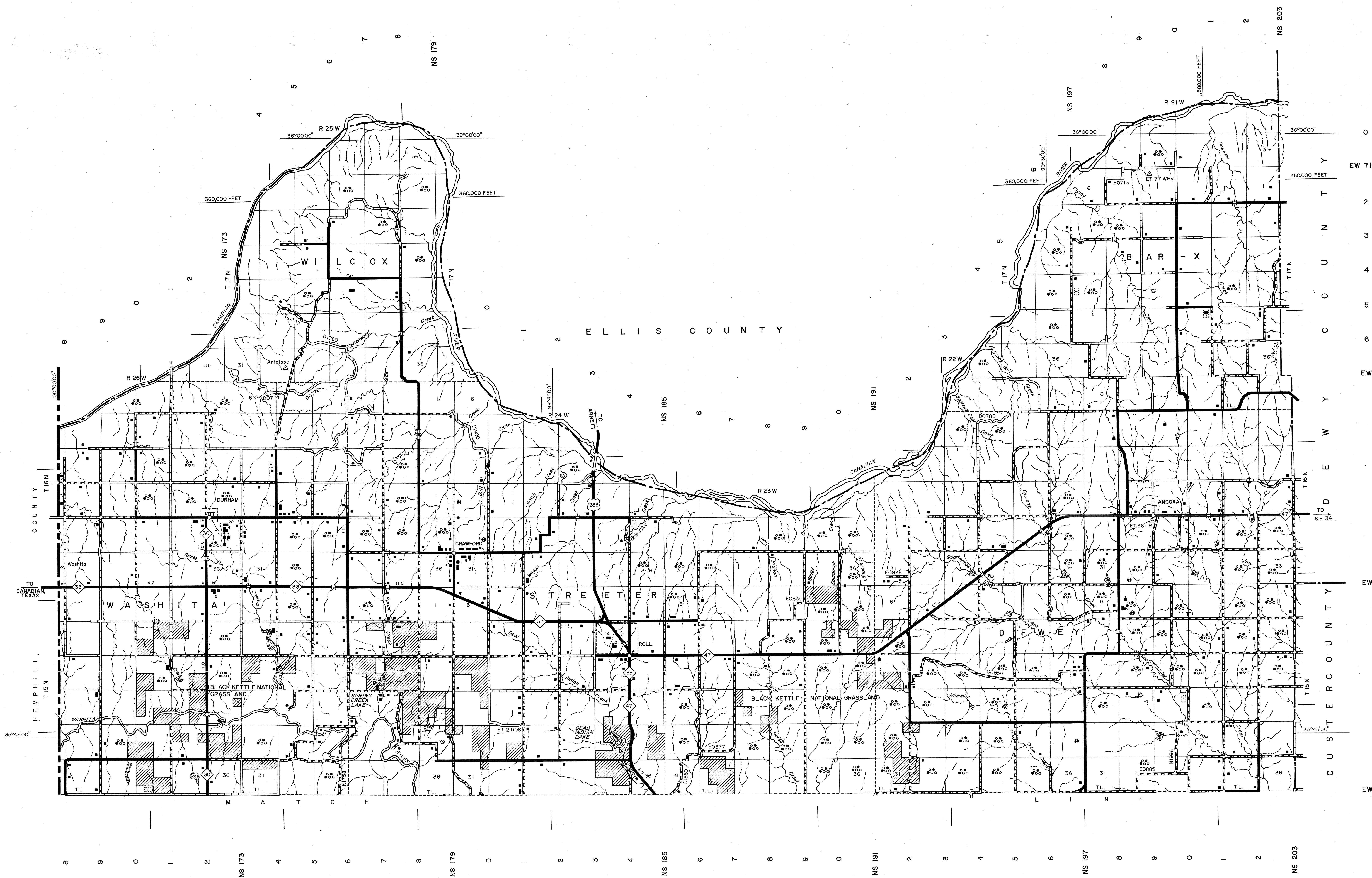
GENERAL HIGHWAY MAP
ROGER MILLS COUNTY
OKLAHOMA

PREPARED BY THE
OKLAHOMA DEPARTMENT OF TRANSPORTATION
PLANNING DIVISION
 IN COOPERATION WITH THE
U.S. DEPARTMENT OF TRANSPORTATION
FEDERAL HIGHWAY ADMINISTRATION

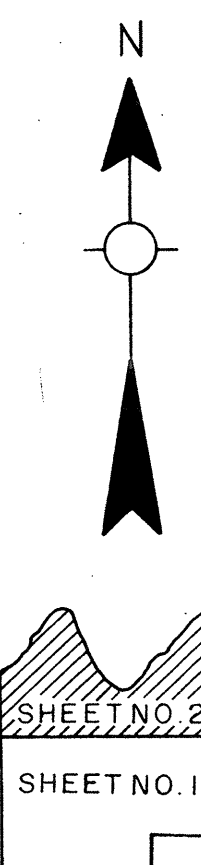
SCALE _____ MILES
 LAMBERT CONFORMAL CONIC PROJECTION U.S. COAST & GEODETIC SURVEY DATA
 2000 FOOT GRID ON HORIZONTAL PLANE COORDINATE SYSTEM NORTH PROJECTION ZONE
 ELEVATION REFERENCED TO THE 1980 U.S. FEET
 COUNTY POPULATION 4,147

NOT FOR RESALE

S T A T E O F T E X A S



EW 71
EW 77
EW 83
EW 89



This map indicates those roads known to the Department to be open to public travel. Placement of a road on the map has no relationship to maintenance responsibility by any level of government.
 Copies of this map are available for public use at nominal cost.
 Address: OKLAHOMA DEPARTMENT OF TRANSPORTATION
 REPRODUCTION BRANCH Phone (405) 521-2586
 200 N.E. 21st STREET
 OKLAHOMA CITY, OKLAHOMA 73105

ALL RIGHTS RESERVED SHEET 2 OF 2 SHEETS