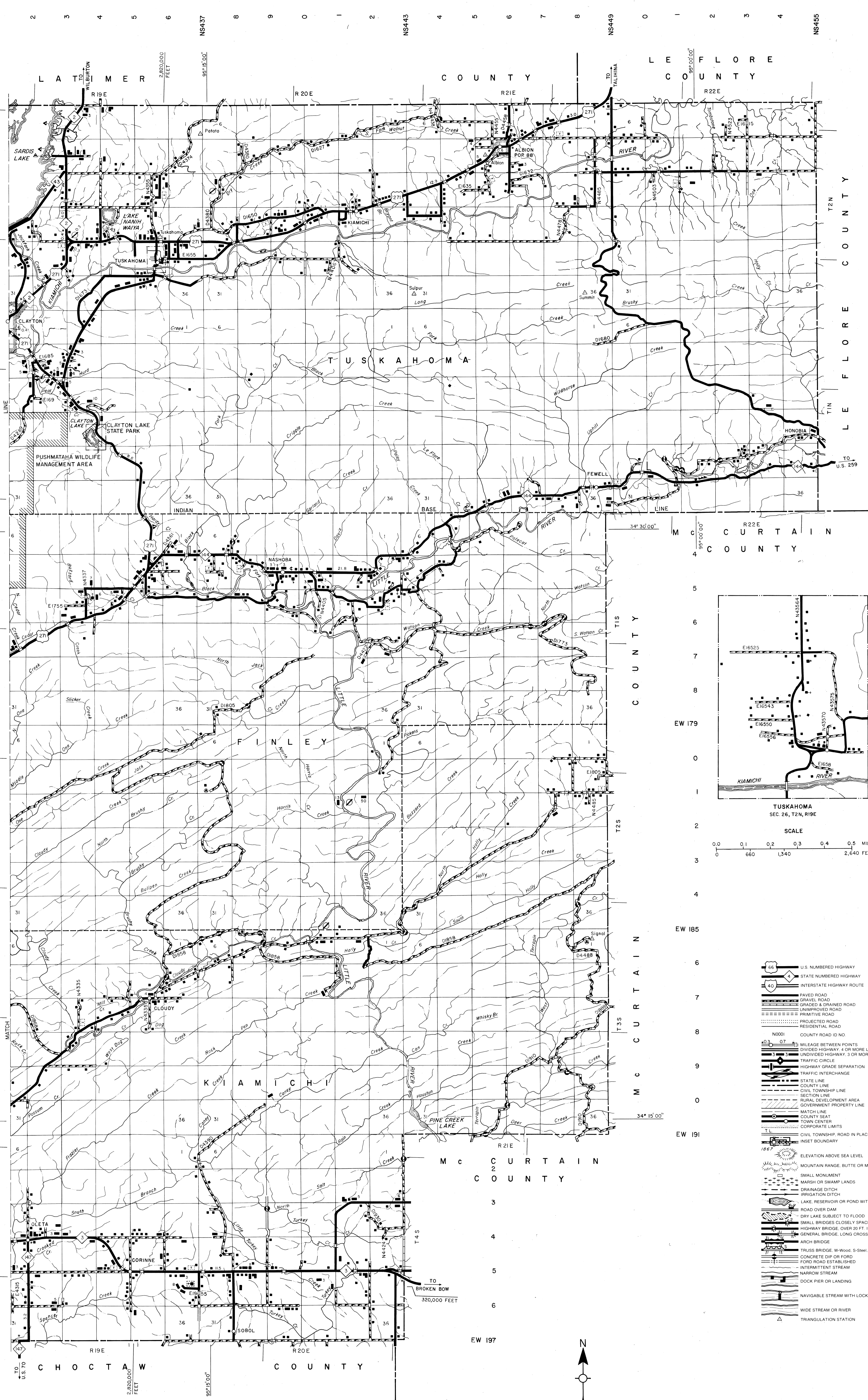
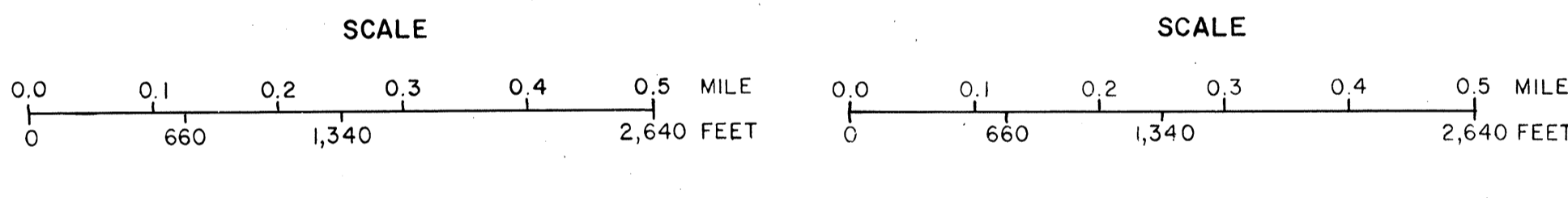
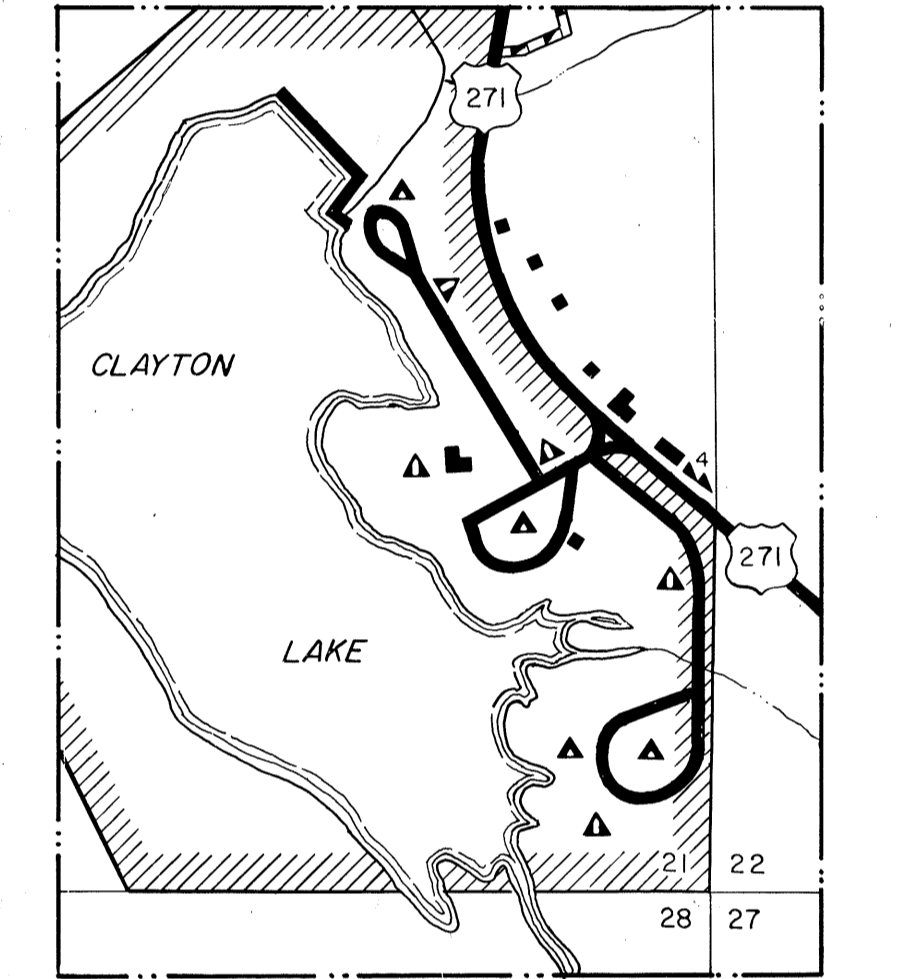
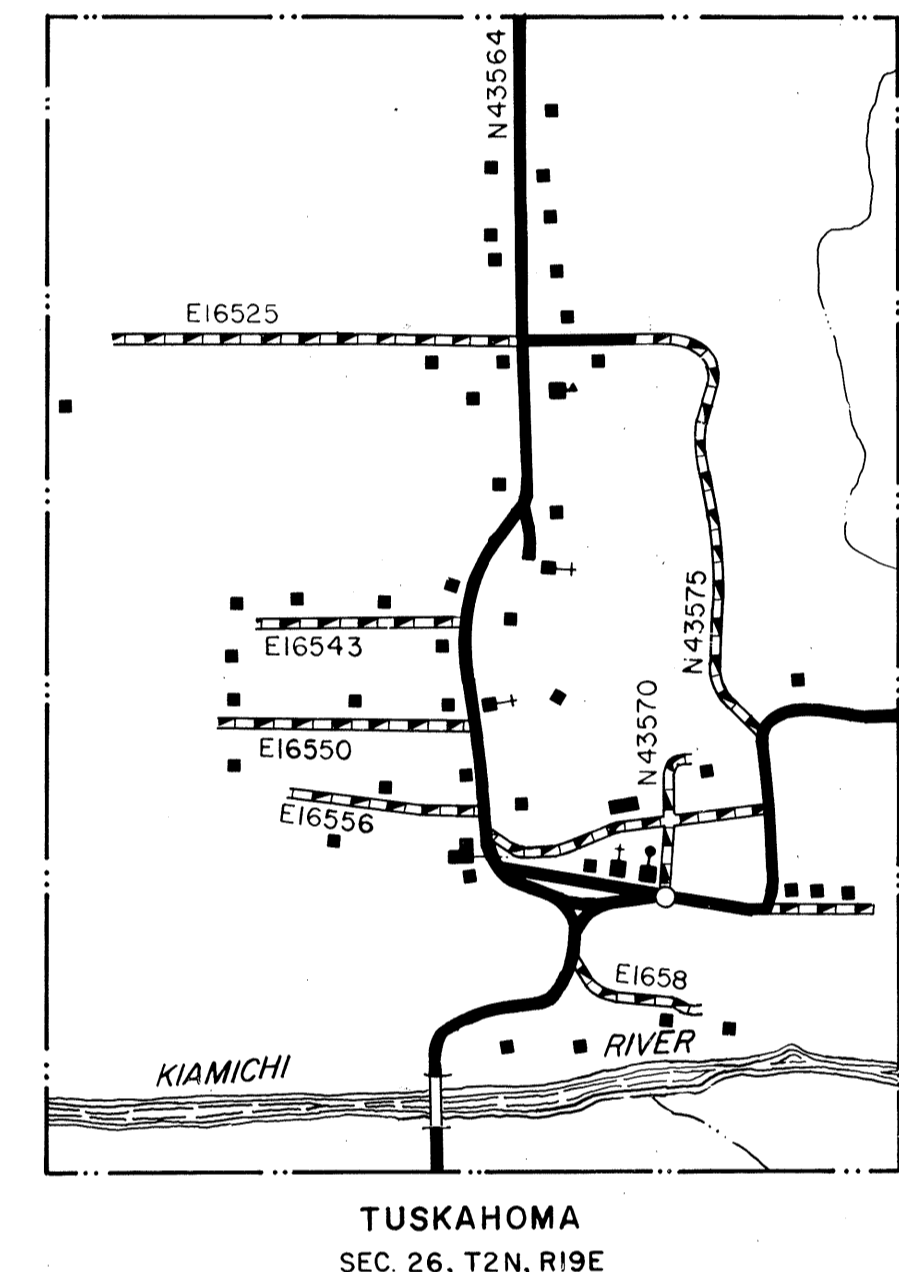


PUSHMATAHA NO. 1

This map includes those roads shown to the Department to be open to public use. It does not include those roads shown to be closed to public use. The Department is not responsible for any errors or omissions in this map. The Department of Transportation is not responsible for any errors or omissions in this map.



EW 161
2
3
4
5
6
EW 167
8
9
0
1
2
EW 173

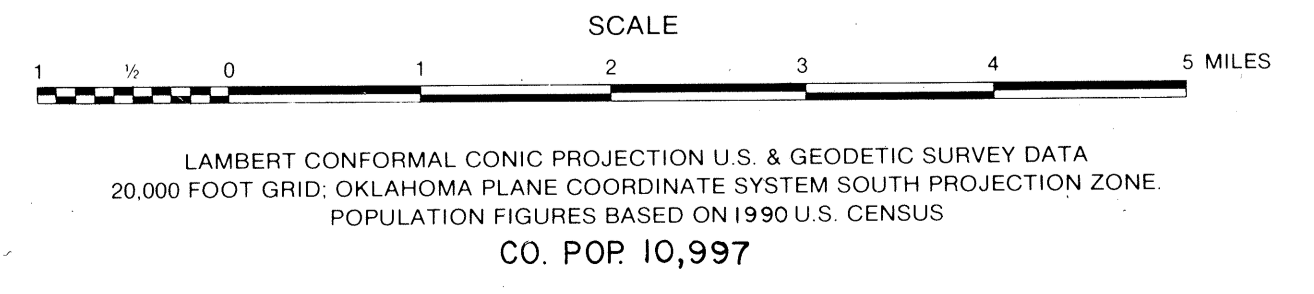


LEGEND

- U.S. NUMBERED HIGHWAY
- STATE NUMBERED HIGHWAY
- INTERSTATE HIGHWAY ROUTE
- PAVED ROAD
- GRAVEL ROAD
- UNIMPROVED ROAD
- PRIMITIVE ROAD
- PROJECTED ROAD
- RESIDENTIAL ROAD
- COUNTY ROAD ID NO.
- MILEAGE BETWEEN POINTS
- DIVIDED HIGHWAY, 4 OR MORE LANES
- UNDIVIDED HIGHWAY, 3 OR MORE LANES
- UNDIVIDED HIGHWAY, 2 LANES
- TRAFFIC CIRCLE
- HIGHWAY GRADE SEPARATION
- TRAFFIC INTERCHANGE
- STATE LINE
- COUNTY LINE
- CIVIL TOWNSHIP LINE
- RURAL DEVELOPMENT AREA
- GOVERNMENT PROPERTY LINE
- MATCH LINE
- COUNTY SEAT
- TOWN CENTER
- CORPORATE LIMITS
- CIVIL TOWNSHIP, ROAD IN PLACE
- INSET BOUNDARY
- ELEVATION ABOVE SEA LEVEL
- MOUNTAIN RANGE, BUTTE OR MESA
- SMALL MONUMENT
- MARSH OR SWAMP LANDS
- DRAINAGE SWITCH
- IRRIGATION DITCH
- LAKE, RESERVOIR OR POND WITH DAM
- ROAD OVER DAM
- DRY LAKE SUBJECT TO FLOOD
- SMALL BRIDGES CLOSELY SPACED
- HIGHWAY BRIDGE, OVER 20 FT. IN LENGTH
- GENERAL BRIDGE, LONG CROSSING
- ARCH BRIDGE
- TRUSS BRIDGE, W-Wood, S-Steel, C-Concrete
- CONCRETE DIP OR FORD
- FORD ROAD ESTABLISHED
- INTERMITTENT STREAM
- NARROW STREAM
- DOCK, PIER OR LANDING
- NAVIGABLE STREAM WITH LOCK & DAM
- WIDE STREAM OR RIVER
- TRIANGULATION STATION
- RAILROAD, ANY NUMBER OF TRACKS
- RAILROAD WITH STATIONS INDICATED
- GRADE CROSSING
- UNDERPASS, R.R. ABOVE
- OVERPASS, R.R. BELOW
- RAILROAD ON STREET
- MILITARY AIRFIELD
- AIRPORT WITH COMPLETE FACILITIES
- AIRPORT WITH LIMITED FACILITIES
- LANDING STRIP, PRIVATE FIELD
- AIRPORT, GENERAL OUTLINE OF FIELD
- ROADSIDE PARK, PUBLIC GROUNDS
- PLAYGROUNDS
- BATHING BEACH OR SWIMMING POOL
- SCENIC SITE
- CAMP SITE
- CAMP OR LODGE, Permanent With Buildings
- MOTEL
- SMALL PARK, 20-50 Acre, CP County
- MUNICIPAL, 10-20 Acre, CP County
- FOREST RANGER STATION
- OBSERVATION OR LOOKOUT TOWER
- CAMP SITE
- FISH HATCHERY
- GOLF COURSE OR COUNTRY CLUB
- ATHLETIC FIELD OR AMUSEMENT PARK
- FAIRGROUNDS, RACE COURSE
- DWELLING
- NUMBER OF DWELLINGS CLOSELY SPACED
- COMBINED BUSINESS AND DWELLING
- POST OFFICE
- POST OFFICE COMBINATIONS
- SEASONAL DWELLINGS
- CHURCH OR OTHER RELIGIOUS BUILDING
- CEMETERY
- CHURCH WITH CEMETERY ADJACENT
- REST HOME
- HOSPITAL
- SMALL BUSINESS
- INDUSTRY
- SAW MILL
- MINE SHAFT OR DRIFT
- OIL OR GAS FIELD
- GASOLINE OR PUMPING STATION
- WAREHOUSE
- GRAVEL PIT
- QUARRY
- SCHOOL
- COMMUNITY HALL OR LODGE
- DRIVE-IN THEATER
- CORRECTIONAL INSTITUTION
- HIGHWAY GARAGE
- JUNK YARDS & CLUMPS A-Automobile, B-Scrap Building Material, C-Refuse, Garbage or Trash Dump
- F-Sanitary Fill, G-Other
- WATER SUPPLY STAND PIPE
- POWER PLANT
- RODENTER STATION
- POWER SUBSTATION
- TELEVISION OR RADIO STATION
- MILITARY INSTALLATION

GENERAL HIGHWAY MAP PUSHMATAHA COUNTY OKLAHOMA

PREPARED BY THE
OKLAHOMA DEPARTMENT OF TRANSPORTATION
PLANNING DIVISION
IN COOPERATION WITH THE
U.S. DEPARTMENT OF TRANSPORTATION
FEDERAL HIGHWAY ADMINISTRATION

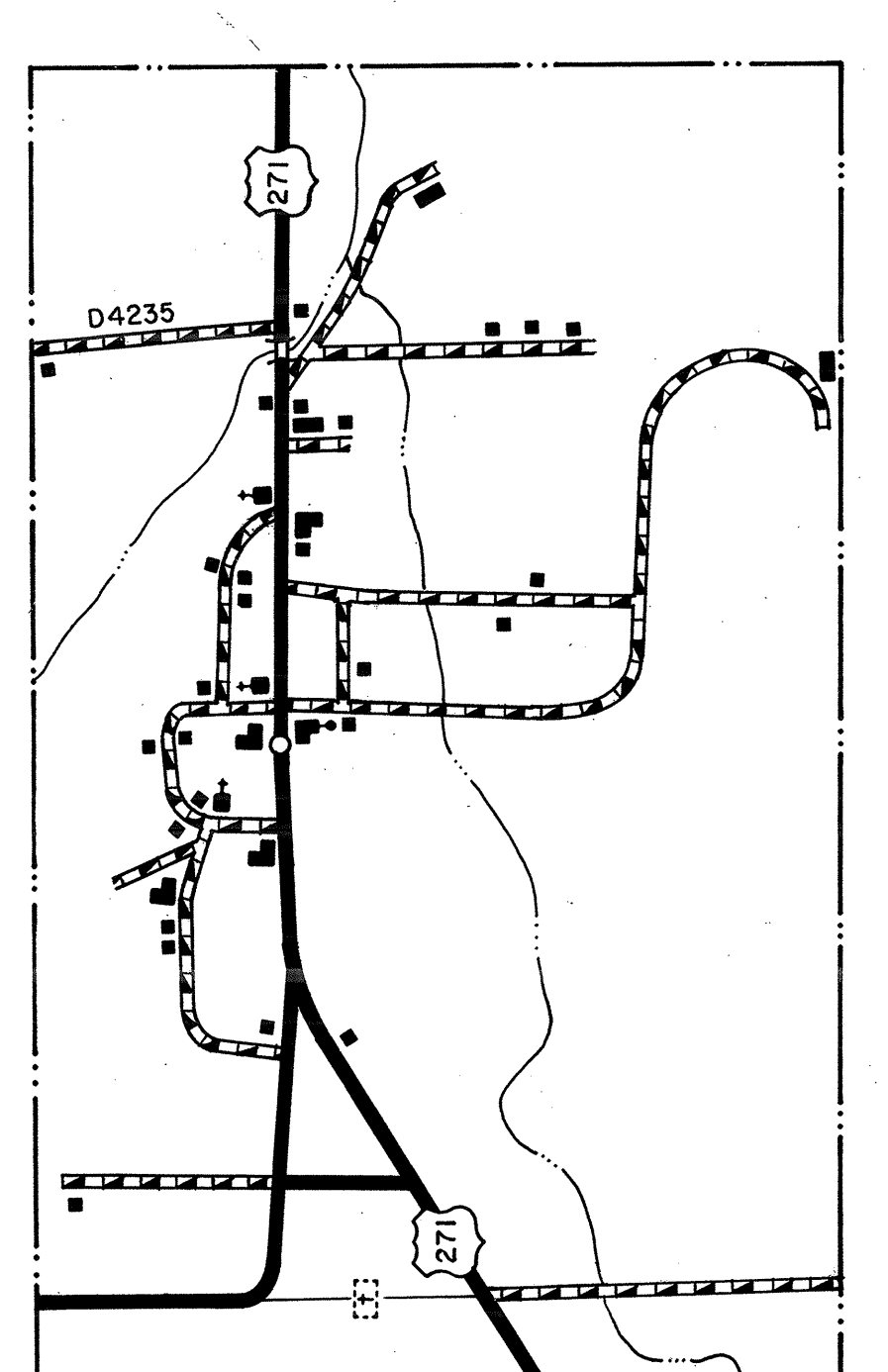
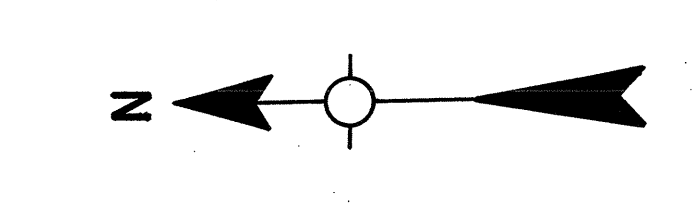
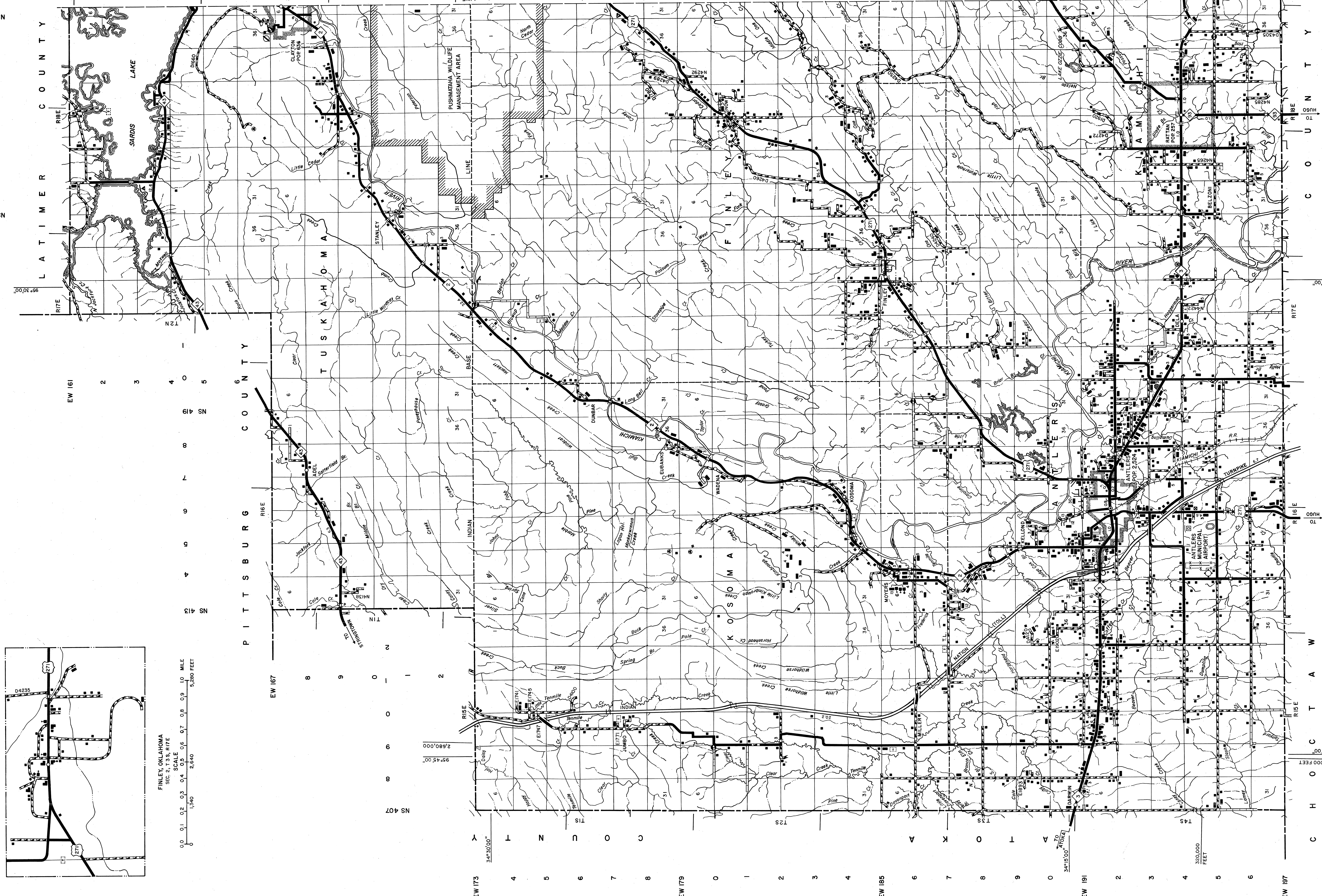


LAMBERT CONFORMAL CONIC PROJECTION U.S. & GEODETIC SURVEY DATA
20,000 FOOT GRID, OKLAHOMA PLANE COORDINATE SYSTEM SOUTH PROJECTION ZONE
POPULATION FIGURES BASED ON 1990 U.S. CENSUS
CO. POP. 10,997

NOT FOR RESALE

GENERAL HIGHWAY MAP PUSHMATAHA COUNTY OKLAHOMA

ALL DATA CURRENT TO
DATE OF INVENTORY
SEPT. 1991
ORIGINAL DRAFTING BY R.G.R. AUG. 1993
STATE SYSTEM REVISED TO MAR. 1998



FINLEY, OKLAHOMA
 SEC. 2, T.35S., R.17E.
 SCALE
 1" = 1,000'
 0 0.1 0.2 0.3 0.4 0.5 0.6 0.7 0.8 0.9 1.0 MILE
 0 0.16 0.32 0.48 0.64 0.80 0.96 1.12 1.28 1.44 FEET

This map indicates those roads known to the Department to be open to public travel. Placement of a road on the map has no relationship to maintenance responsibility by any level of government.
 Copies of this map are available for public use at nominal cost.
 Address: OKLAHOMA DEPARTMENT OF TRANSPORTATION
 REPRODUCTION BRANCH Phone (405) 521-2586
 200 N.E. 21st STREET
 OKLAHOMA CITY, OKLAHOMA 73105

NOT FOR RESALE

ALL RIGHTS RESERVED SEP 1991 SHEET 2 OF 2 SHEETS