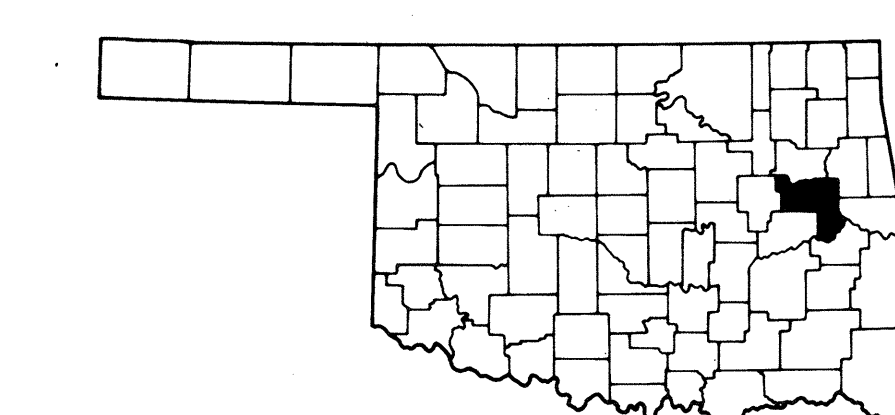
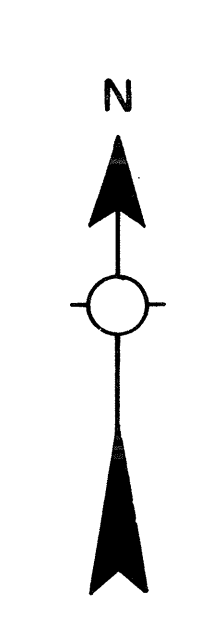


- LEGEND**
- U.S. NUMBERED HIGHWAY
  - STATE NUMBERED HIGHWAY
  - INTERSTATE HIGHWAY ROUTE
  - PAVED ROAD
  - GRAVEL ROAD
  - GRADED & DRAINED ROAD
  - UNIMPROVED ROAD
  - PRIMITIVE ROAD
  - PROJECTED ROAD
  - RESIDENTIAL ROAD
  - COUNTY ROAD ID NO.
  - MILEAGE BETWEEN POINTS
  - DIVIDED HIGHWAY 4 OR MORE LANES
  - UNDIVIDED HIGHWAY 3 OR MORE LANES
  - TRAFFIC CIRCLE
  - HIGHWAY GRADE SEPARATION
  - TRAFFIC INTERCHANGE
  - STATE LINE
  - COUNTY LINE
  - RURAL DEVELOPMENT AREA
  - GOVERNMENT PROPERTY LINE
  - MATCH LINE
  - COUNTY SEAT
  - TOWN CENTER
  - CORPORATE LIMITS
  - CIVIL TOWNSHIP ROAD IN PLACE
  - ELEVATION ABOVE SEA LEVEL
  - MOUNTAIN RANGE BUTTE OR MESA
  - SMALL MONUMENT
  - MARSH OR SWAMPY LANDS
  - DRAINAGE DITCH
  - IRRIGATION DITCH
  - LAKE, RESERVOIR OR POND WITH DAM
  - ROAD OVER DAM
  - ROAD OVER BRIDGE
  - DRY LAKE SUBJECT TO FLOOD
  - SMALL BRIDGES CLOSELY SPACED
  - HIGHWAY BRIDGE OVER 20 FT. IN LENGTH
  - GENERAL BRIDGE LONG CROSSING
  - ARCH BRIDGE
  - TRUSS BRIDGE W-Wood S-Steel C-Concrete
  - CONCRETE DIRT OR FORD
  - FORD ROAD ESTABLISHED
  - INTERMITTENT STREAM
  - NARROW STREAM
  - DOCK PIER OR LANDING
  - NAVIGABLE STREAM WITH LOCK & DAM
  - TRIANGULATION STATION
  - RAILROAD ANY NUMBER OF TRACKS
  - RAILROAD WITH STATIONS INDICATED
  - GRADE CROSSING
  - UNDERPASS, R.R. ABOVE
  - OVERPASS, R.R. BELOW
  - RAILROAD ON STREET
  - MILITARY AIRFIELD
  - AIRPORT WITH COMPLETE FACILITIES
  - AIRPORT WITH LIMITED FACILITIES
  - LANDING STRIP PRIVATE FIELD
  - AIRPORT GENERAL OUTLINE OF FIELD
  - RUNWAYS SHOWN IN POSITION
  - ROADSIDE DRAIN
  - Picnic Grounds
  - PLAYGROUNDS
  - BATHING BEACH OR SWIMMING POOL
  - SCENIC SITE
  - CAMP OR LODGE Permanent With Buildings
  - MOTEL
  - SMALL PARK SP State CP County
  - Municipal TR Trailer Park
  - FOREST RANGER STATION
  - OBSERVATION OR LOOKOUT TOWER
  - CAMP SITE
  - FISH HATCHERY
  - GOLF COURSE OR COUNTRY CLUB
  - ATHLETIC FIELD OR AMUSEMENT PARK
  - FAIRGROUNDS RACE COURSE
  - DWELLING
  - NUMBER OF DWELLINGS CLOSELY SPACED
  - COMBINED BUSINESS AND DWELLING
  - POST OFFICE
  - POST OFFICE COMBINATIONS
  - SEASONAL DWELLINGS
  - CHURCH OR OTHER RELIGIOUS BUILDING
  - CEMETERY
  - CHURCH WITH CEMETERY ADJACENT
  - REST HOME
  - HOSPITAL
  - SMALL BUSINESS
  - INDUSTRY
  - SAW MILL
  - MINE SHAFT OR DRIFT
  - ON OR GAS FIELD
  - GAUGING OR PUMPING STATION
  - DWELLING
  - WAREHOUSE
  - GRAVEL PIT
  - QUARRY
  - SCHOOL
  - COMMUNITY HALL OR LODGE
  - DRIVE-IN THEATER
  - CORRECTIONAL INSTITUTION
  - HIGHWAY GARAGE
  - JUNK YARDS & DUMPS A-Automobile
  - B-Building Material
  - D-Refuse Garbage or Trash Dump
  - F-Sanitary Fill G-Other
  - SEWAGE DISPOSAL PLANT
  - WATER SUPPLY STAND PIPE
  - POWER PLANT
  - BOOSTER STATION
  - POWER SUBSTATION
  - TELEVISION OR RADIO STATION
  - MILITARY INSTALLATION



**GENERAL HIGHWAY MAP  
MUSKOGEE COUNTY  
OKLAHOMA**

PREPARED BY THE  
**OKLAHOMA DEPARTMENT OF TRANSPORTATION  
PLANNING DIVISION**

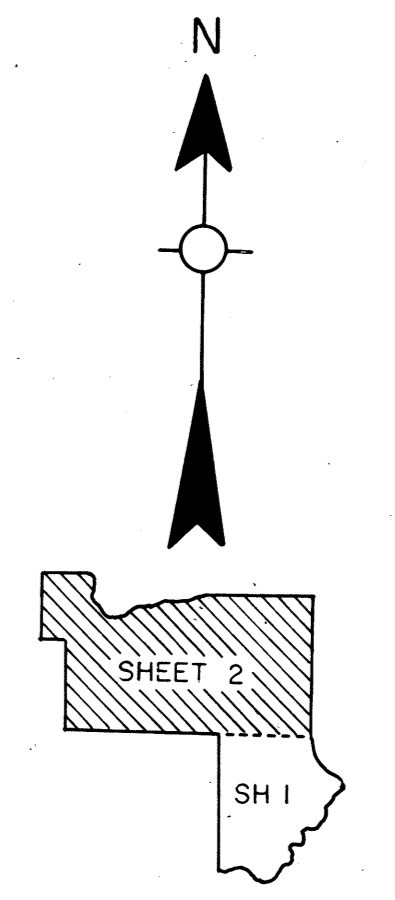
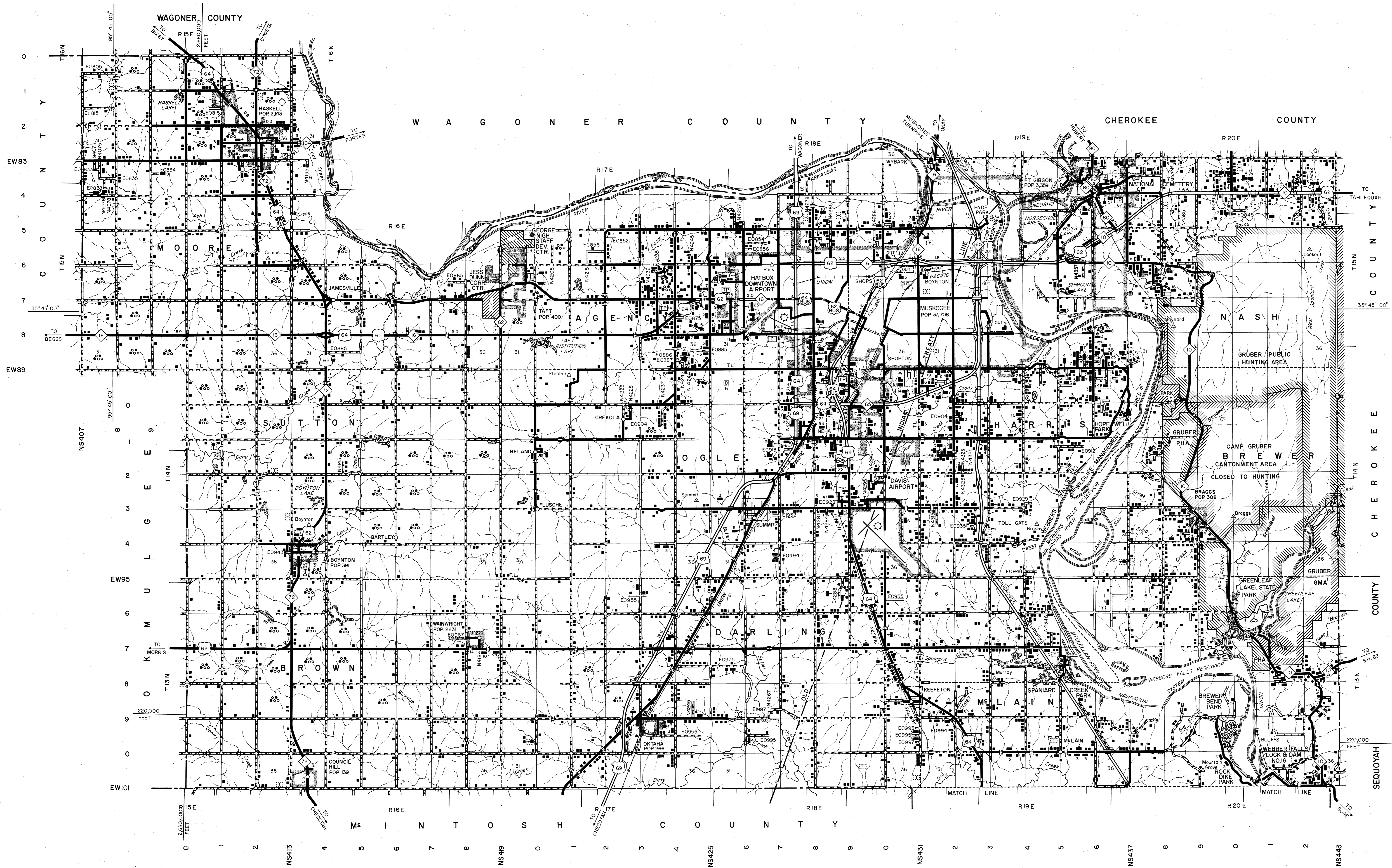
IN COOPERATION WITH THE  
**U.S. DEPARTMENT OF TRANSPORTATION  
FEDERAL HIGHWAY ADMINISTRATION**

SCALE  
0 1 2 3 4 5 MILES

LAMBERT CONFORMAL CONIC PROJECTION U.S. COAST & GEODETIC SURVEY DATA  
20000 FOOT GRID OKLAHOMA PLANE COORDINATE SYSTEM NORTH PROJECTION ZONE  
POPULATION FIGURES BASED ON 1990 U.S. CENSUS  
CO. POP. 68,078

This map indicates those roads known to the Department to be open to public travel. Placement of a road on the map has no relationship to maintenance responsibility by any level of government.  
Copies of this map are available for public use at nominal cost.  
Address: OKLAHOMA DEPARTMENT OF TRANSPORTATION  
REPRODUCTION BRANCH Phone (405) 521-2586  
200 N.E. 21st STREET  
OKLAHOMA CITY, OKLAHOMA 73105

**NOT FOR RESALE**



This map indicates those roads known to the Department to be open to public travel. Placement of a road on the map has no relationship to maintenance responsibility by any level of government.  
 Copies of this map are available for public use at nominal cost.  
 Address: OKLAHOMA DEPARTMENT OF TRANSPORTATION  
 REPRODUCTION BRANCH Phone (405) 521-2586  
 200 N.E. 21st STREET  
 OKLAHOMA CITY, OKLAHOMA 73105

ALL RIGHTS RESERVED

SHEET 2 OF 2 SHEETS

**NOT FOR RESALE**