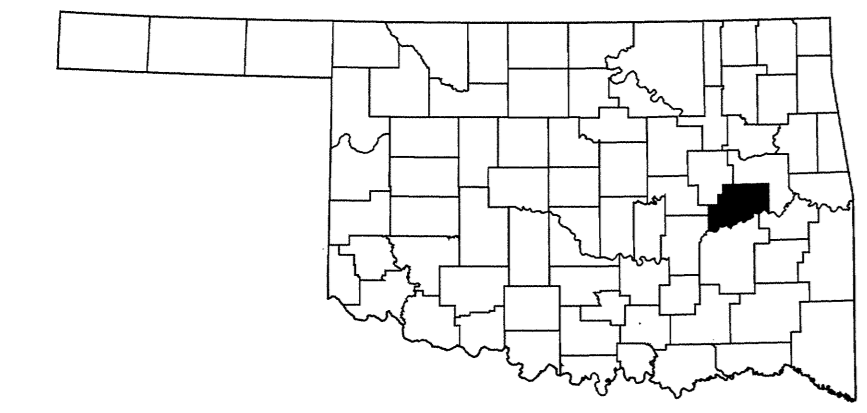
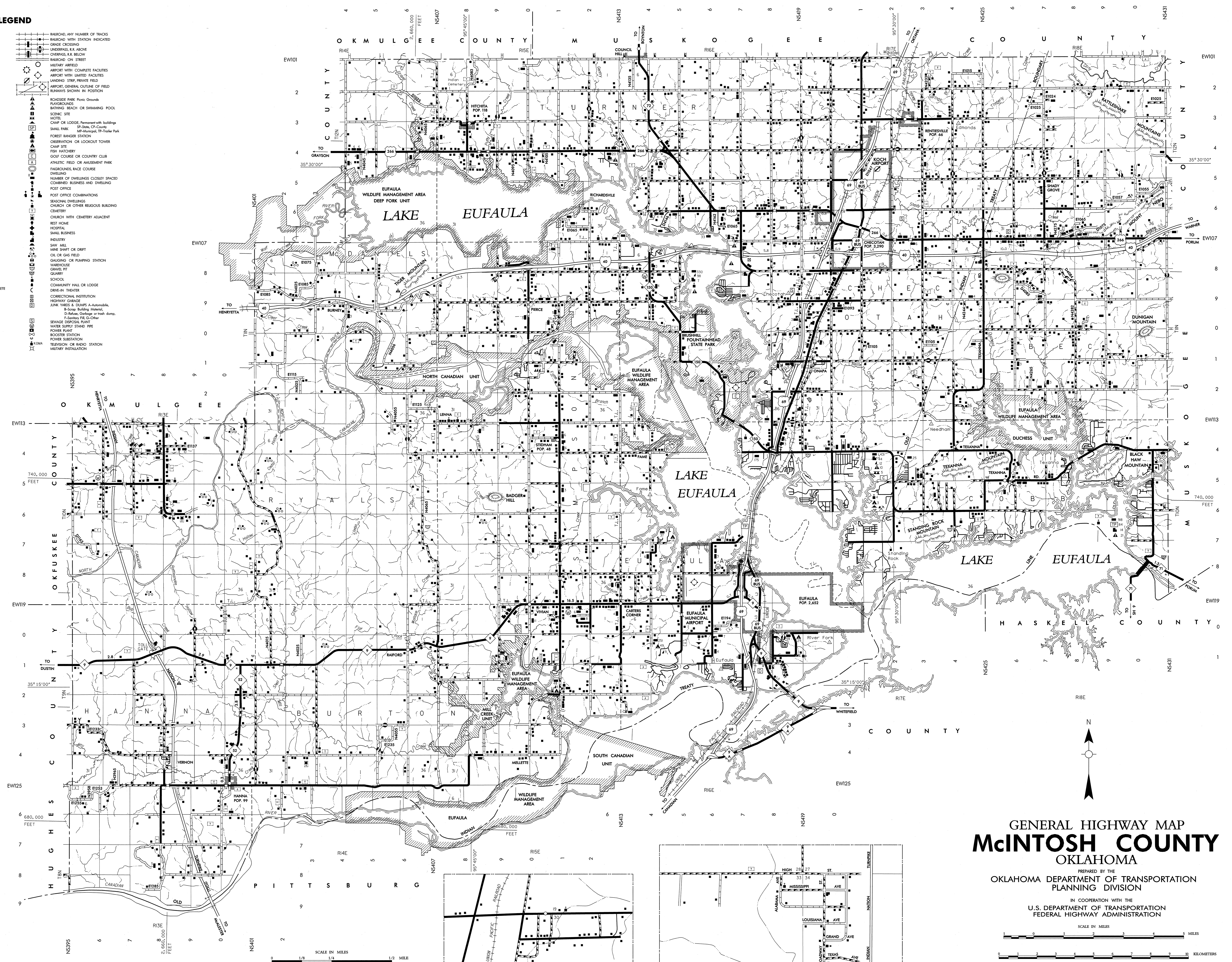


LEGEND

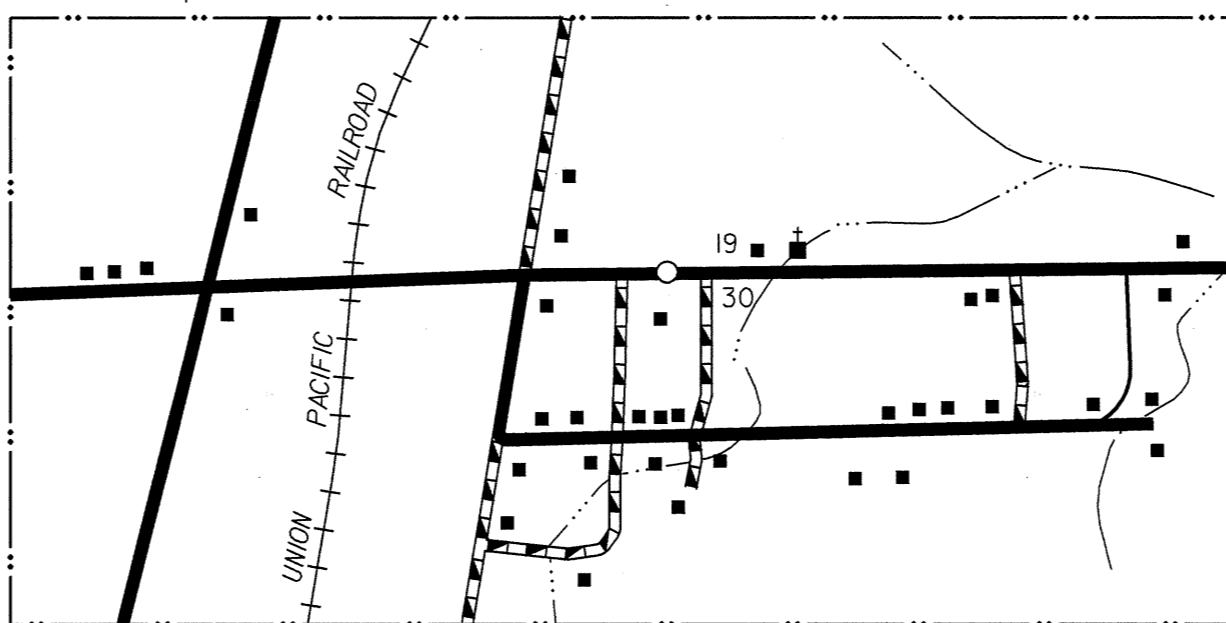
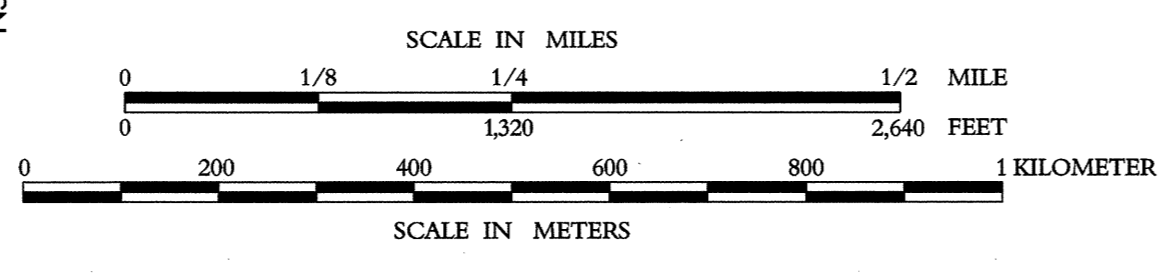
- RAILROAD, ANY NUMBER OF TRACKS
- RAILROAD WITH STATION INDICATED
- GRADE CROSSING
- UNDERPASS, R.R. ABOVE
- OVERPASS, R.R. BELOW
- RAILROAD ON STREET
- MILITARY AIRFIELD
- AIRPORT WITH COMPLETE FACILITIES
- AIRPORT WITH LIMITED FACILITIES
- LANDING STRIP, PRIVATE FIELD
- AIRPORT, GENERAL OUTLINE OF FIELD
- RUNWAYS SHOWN IN POSITION
- ROADSIDE PARK: Picnic Grounds
- PLAYGROUND
- BATHING BEACH OR SWIMMING POOL
- SCENIC SITE
- MOTEL
- CAMP OR LODGE, Permanent with buildings
- FOREST KANGAROO STATION
- OBSERVATION OR LOOKOUT TOWER
- CAMP SITE
- FISH HATCHERY
- GOLF COURSE OR COUNTRY CLUB
- ATHLETIC FIELD OR AMUSEMENT PARK
- FASCINATED RACE COURSE
- DWELLING
- NUMBER OF DWELLINGS CLOSELY SPACED
- COUNTRIED BUSINESS AND DWELLING
- POST OFFICE
- POST OFFICE COMBINATIONS
- SEASONAL DWELLINGS
- CHURCH OR OTHER RELIGIOUS BUILDING
- CEMETERY
- CHURCH WITH CEMETERY ADJACENT
- BEST HOME
- HOSPITAL
- SHALE BUSINESS
- INDUSTRY
- SAW MILL
- MINE SHaft OR DRIFT
- OIL OR GAS FIELD
- GASOLINE OR PUMPING STATION
- WAREHOUSE
- QUARRY
- SCHOOL
- COMMUNITY HALL OR LODGE
- DRIVE-IN THEATER
- CORRECTIONAL INSTITUTION
- HIGHWAY GARAGE
- JUNK YARDS & DUMPS A-Automobile, B-Schools, Building, Warehouse, C-Sewage, D-Business, E-Other
- SEWAGE DISPOSAL PLANT
- WATER SUPPLY STAND PIPE
- POWER PLANT
- BOOSTER STATION
- POWER SUBSTATION
- TELEVISION OR RADIO STATION
- MILITARY INSTALLATION
- STATE LINE
- COUNTY LINE
- CIVIL TOWNSHIP LINE
- SECTION LINE
- RURAL DEVELOPMENT AREA
- GOVERNMENT PRIORITY LINE
- MATCH LINE
- COUNTY SEAT
- TOWNSHIP CENTER
- CORPORATE LIMITS
- CIVIL TOWNSHIP ROAD IN PLACE
- STREET BOUNDARY
- ELEVATION ABOVE SEA LEVEL
- MOUNTAIN RANGE, BUTTE OR MESA
- SMALL MONUMENT
- MARSH OR SWAMP LANDS
- DRAINAGE DITCH
- IRRIGATION DITCH
- LAKE, RESERVOIR OR POND WITH DAM
- ROAD OVER DAM
- DRY LAKE SUBJECT TO FLOOD
- SMALL BRIDGES CLOSELY SPACED
- HIGHWAY BRIDGE, OVER 50 FT IN LENGTH
- GENERAL BRIDGE, LONG CROSSING
- ARCH BRIDGE
- TRUSS BRIDGE-WOODS-STEEL-CONCRETE
- CONCRETE DIP OR FORD
- FORD ROAD ESTABLISHED
- INTERMITTENT STREAM
- NARROW STREAM
- DOCK, PIER OR LANDING
- NAVIGABLE STREAM WITH LOCK & DAM
- WIDE STREAM OR RIVER
- TRANSMISSION STATION



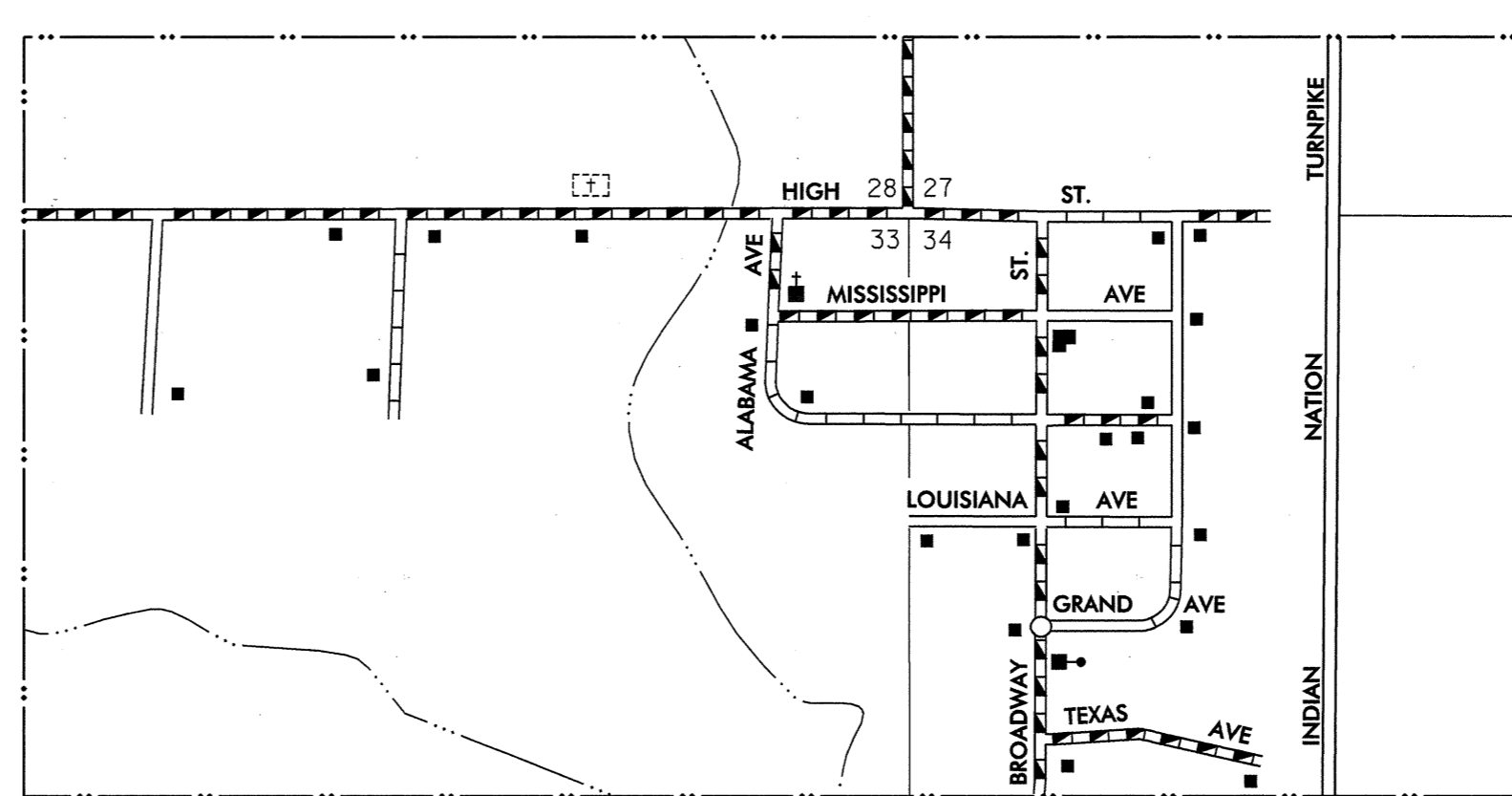
ALL DATA CURRENT TO DATE OF INVENTORY NOVEMBER 1999
 ORIGINAL DRAFTING BY ALLR MAY 2000
 STATE SYSTEM REVISED TO NOVEMBER 1999

Copies of this map are available for public use at nominal cost.
 Address: OKLAHOMA DEPARTMENT OF TRANSPORTATION
 REPRODUCTION BRANCH Phone (405) 521-2586
 500 N.E. 21st STREET
 OKLAHOMA CITY, OKLAHOMA 73105-3204

This map indicates those roads known to the Department to be open to public travel. Placement of a road on the map has no relationship to maintenance responsibility by any level of government.



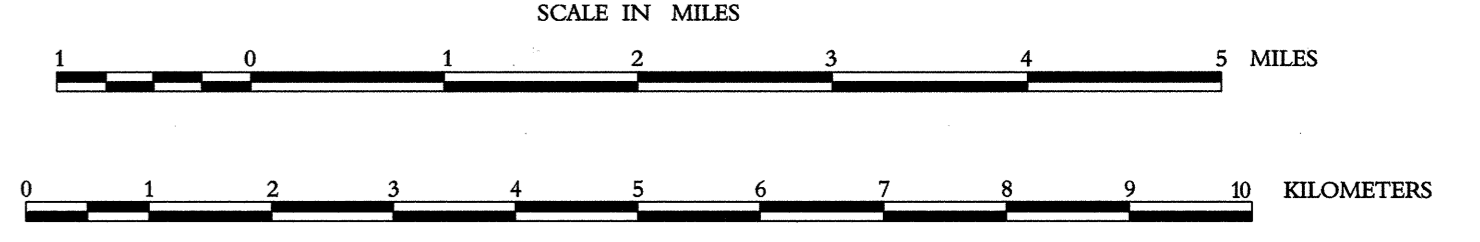
OKMFA, OKLAHOMA
 SEC. 19, 30, 31IN, R17E



VERNON, OKLAHOMA
 SEC. 33, 34, 19 N, R13E

**GENERAL HIGHWAY MAP
 McINTOSH COUNTY
 OKLAHOMA**

PREPARED BY THE
**OKLAHOMA DEPARTMENT OF TRANSPORTATION
 PLANNING DIVISION**
 IN COOPERATION WITH THE
**U.S. DEPARTMENT OF TRANSPORTATION
 FEDERAL HIGHWAY ADMINISTRATION**



LAMBERT CONFORMAL CONIC PROJECTION U.S. & GEODETIC SURVEY DATA
 20,000 FOOT GRID, OKLAHOMA PLANE COORDINATE SYSTEM, NORTH PROJECTION ZONE.
 POPULATION FIGURES BASED ON 1990 U.S. CENSUS.
 CO. POP. 16,779