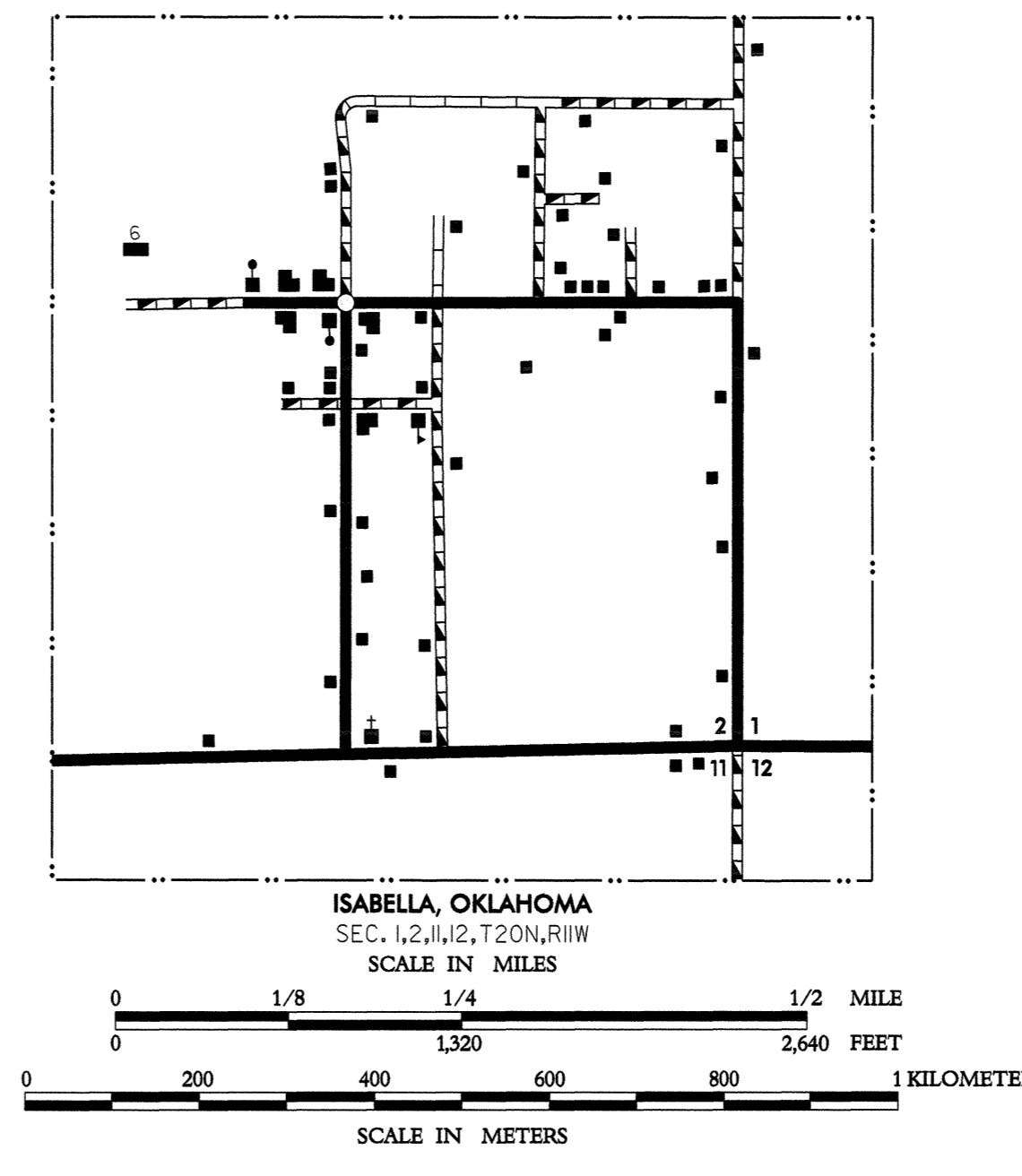
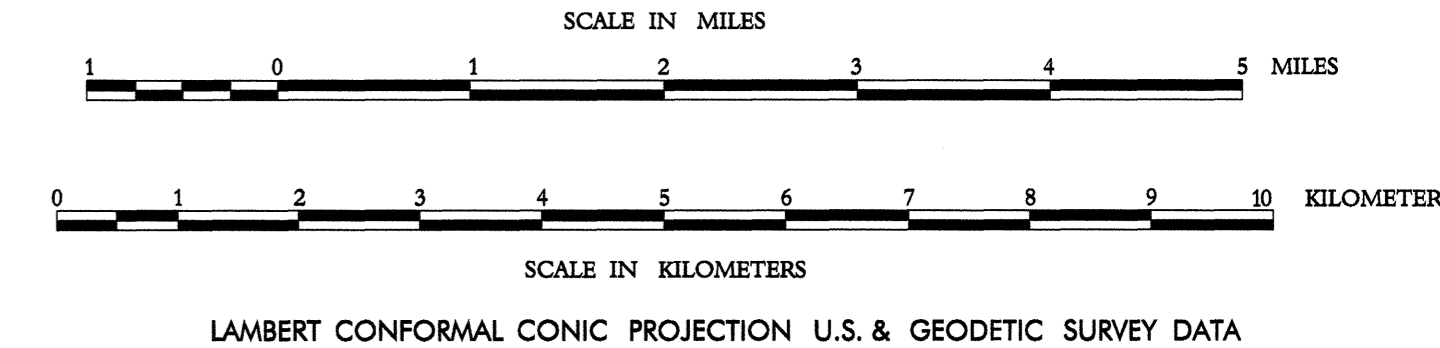


- LEGEND**
- 66 U.S. NUMBERED HIGHWAY
  - STATE NUMBERED HIGHWAY
  - INTERSTATE HIGHWAY ROUTE
  - PAVED ROAD
  - GRAVEL ROAD
  - GRADES & DRAINED ROAD
  - UNPAVED ROAD
  - PRIMITIVE ROAD
  - PROJECTED ROAD
  - RESIDENTIAL ROAD
  - N0001 COUNTY ROAD ID. NO.
  - WILDLIFE BETWEEN POINTS
  - DIVIDED HIGHWAY, 4 OR MORE LANES
  - UNDIVIDED HIGHWAY, 3 OR MORE LANES
  - TRAFFIC CIRCLE
  - HIGHWAY GRADE SEPARATION
  - TRAFFIC INTERCHANGE
  - STATE LINE
  - COUNTY LINE
  - CIVIL TOWNSHIP AREA
  - SECTION LINE
  - RURAL DEVELOPMENT AREA
  - GOVERNMENT PROPERTY LINE
  - WATER LINE
  - COUNTY SEAT
  - TOWN CENTER
  - CORPORATE LIMITS
  - CIVIL TOWNSHIP, ROAD IN PLACE
  - INSET BOUNDARY
  - ELEVATION ABOVE SEA LEVEL
  - MOUNTAIN RANGE, BUTTE OR MESA
  - SMALL MOUND
  - MARSH OR SWAMP LANDS
  - DRAINAGE DITCH
  - IRRIGATION DITCH
  - LAKE, RESERVOIR OR POND WITH DAM
  - ROAD OVER DAM
  - DRY LAKE SUBJECT TO FLOOD
  - SMALL BRIDGE, CLOSEST SPACED
  - HIGHWAY BRIDGE, OVER 20 FT. IN LENGTH
  - GENERAL BRIDGE, LONG CROSSING
  - ARCH BRIDGE
  - TRUSS BRIDGE, WOODS-STEEL, C-CONCRETE
  - CONCRETE DIP OR FORD
  - FORD ROAD ESTABLISHED
  - INTERMITTENT STREAM
  - NARROW STREAM
  - DOCK, PIER OR LANDING
  - NAVIGABLE STREAM WITH LOCK & DAM
  - WIDE STREAM OR RIVER
  - TRIANGULATION STATION
  - RAILROAD, ANY NUMBER OF TRACKS
  - RAILROAD WITH STATION INDICATED
  - GRADE CROSSING
  - UNDERPASS, R.R. ABOVE
  - OVERPASS, R.R. BELOW
  - RAILROAD ON STREET
  - WETLAND AREAS
  - AIRPORT WITH COMPLETE FACILITIES
  - AIRPORT WITH LIMITED FACILITIES
  - LANDING STRIP, PRIVATE FIELD
  - AIRPORT, GENERAL OUTLINE OF FIELD
  - RUNWAYS SHOWN IN POSITION
  - RODENT TRAP
  - PLAYGROUND
  - BATHING BEACH OR SWIMMING POOL
  - SCENIC SITE
  - NOTE
  - CAMP OR LODGE, Permanent with buildings
  - SMALL PARK
  - SP-Stream, CP-County
  - NP-National, SP-State Park
  - FOREST RANGER STATION
  - OBSERVATION OR LOOKOUT TOWER
  - CAMP SITE
  - FISH HATCHERY
  - GOLF COURSE OR COUNTRY CLUB
  - ATHLETIC FIELD OR AMUSEMENT PARK
  - FAIRGROUNDS, RACE COURSE
  - DWELLING
  - NUMBER OF DWELLINGS CLOSELY SPACED
  - COMBINED BUSINESS AND DWELLING
  - POST OFFICE
  - POST OFFICE COMBINATIONS
  - SEASONAL DWELLINGS
  - CHURCH OR OTHER RELIGIOUS BUILDING
  - CEMETERY
  - CHURCH WITH CEMETERY ADJACENT
  - REST HOME
  - HOSPITAL
  - SMALL BUSINESS
  - INDUSTRY
  - SAW MILL
  - MINE SHAFT OR DRIFT
  - OIL OR GAS FIELD
  - Gauging or Pumping Station
  - WAREHOUSE
  - GRAVEL PIT
  - QUARRY
  - SCHOOL
  - COMMUNITY HALL OR LODGE
  - DRIVE-IN THEATER
  - CONVENTIONAL INSTITUTION
  - HIGHWAY GAUGE
  - WATER TOWER
  - WATER TOWER & QUAYS, Automobile
  - 6-Storey Building Material
  - 5-Storey Building Material
  - 3-Storey Building Material
  - SEWAGE DISPOSAL PLANT
  - WATER SUPPLY STATION
  - POWER PLANT
  - ROCKET STATION
  - POWER SUBSTATION
  - TELEPHONE OR RADIO STATION
  - MILITARY INSTALLATION

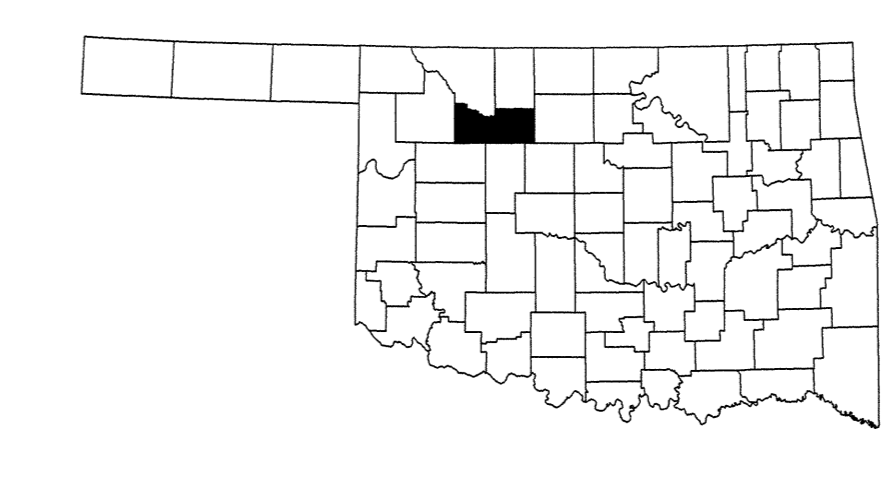


**GENERAL HIGHWAY MAP  
MAJOR COUNTY  
OKLAHOMA**

PREPARED BY THE  
OKLAHOMA DEPARTMENT OF TRANSPORTATION  
PLANNING DIVISION  
IN COOPERATION WITH THE  
U.S. DEPARTMENT OF TRANSPORTATION  
FEDERAL HIGHWAY ADMINISTRATION

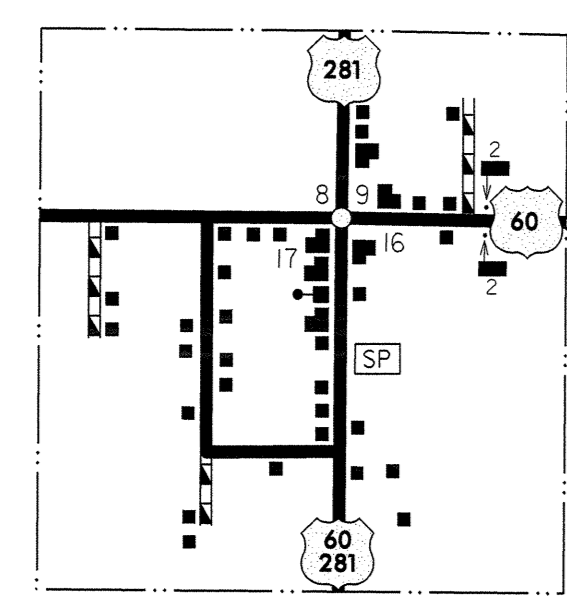
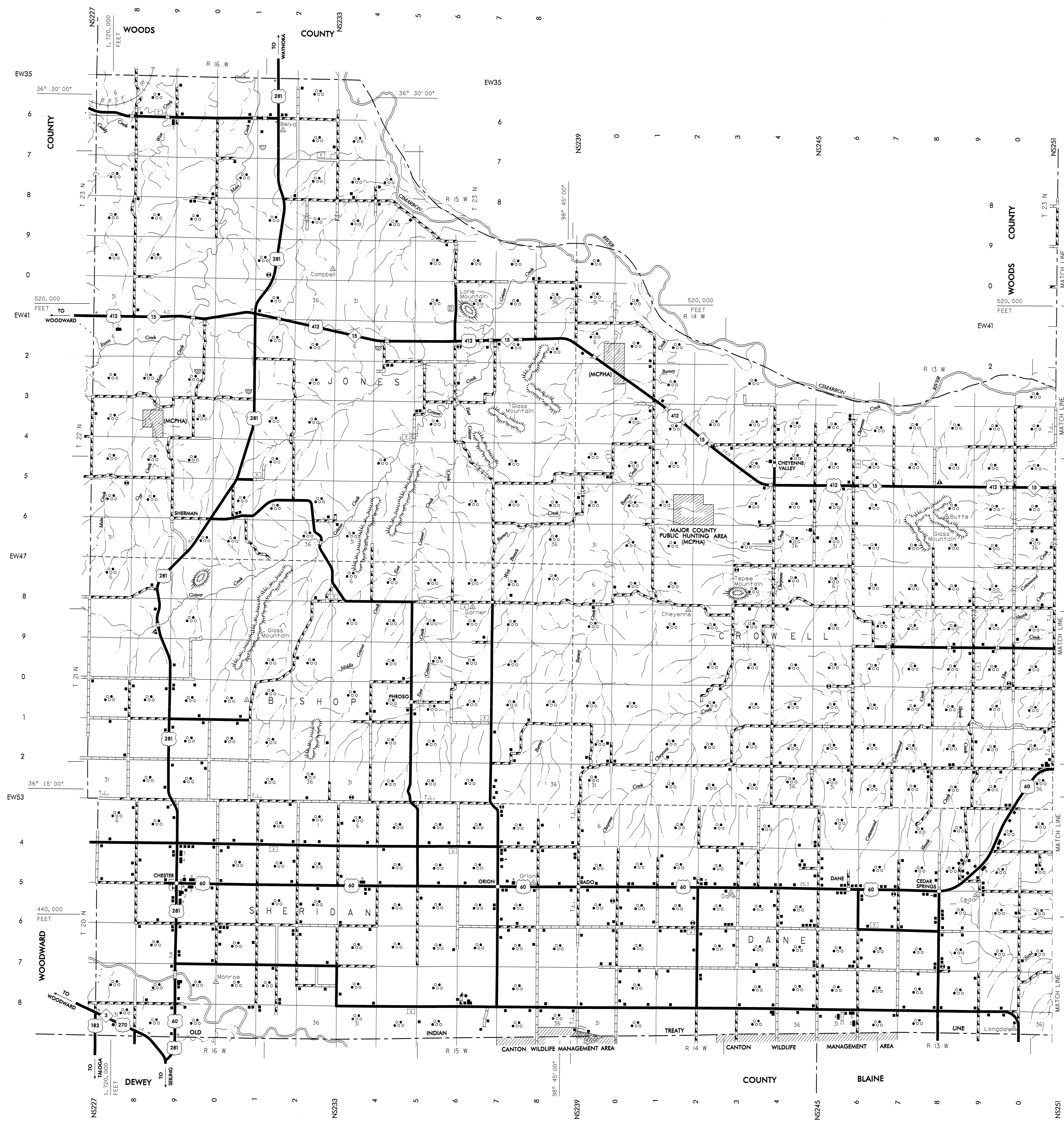


ALL DATA CURRENT TO  
DATE OF INVENTORY  
FEBRUARY, 2000  
ORIGINAL DRAFTING BY W.A.T. JANUARY, 2002  
STATE SYSTEM REVISED TO JANUARY, 2002

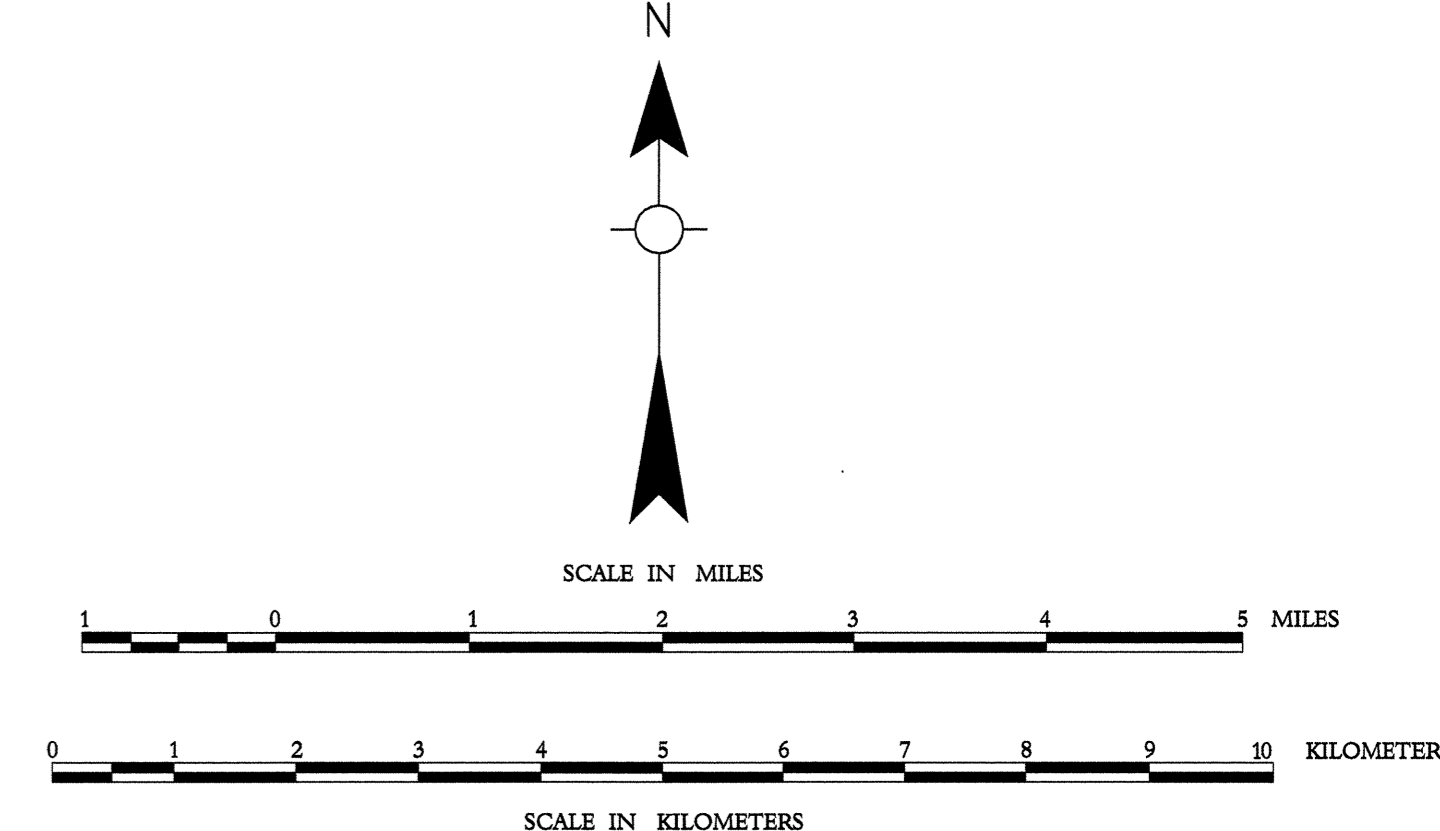
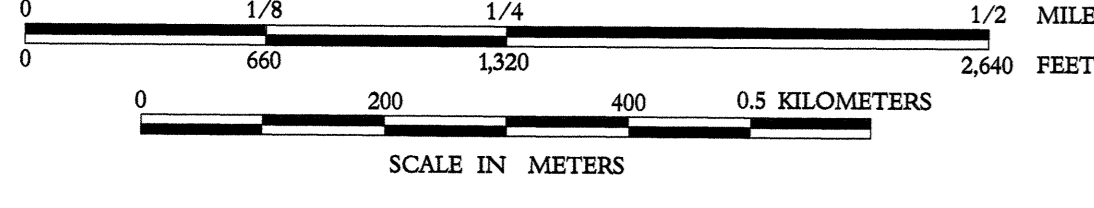


Copies of this map are available for public use at nominal cost. This map indicates those roads known to the Department to be open to public travel. Placement of a road on the map has no relationship to maintenance responsibility by any level of government.  
Address:  
OKLAHOMA DEPARTMENT OF TRANSPORTATION  
REPRODUCTION BRANCH Phone (405) 521-2386  
200 N.E. 21st STREET  
OKLAHOMA CITY, OKLAHOMA 73105-3204

LAMBERT CONFORMAL CONIC PROJECTION U.S. & GEODETIC SURVEY DATA  
20,000 FOOT GRID; OKLAHOMA PLANE COORDINATE SYSTEM, NORTH PROJECTION ZONE  
POPULATION FIGURES BASED ON 2000 U.S. CENSUS  
CO. POP. 7,545



CHESTER, OKLAHOMA  
 SEC'S. 8, 9, 16, 17, 20, 29, 36  
 SCALE IN MILES



Copies of this map are available for public use at nominal cost. This map indicates those roads known to the Department to be open to public travel. Placement of a road on the map has no relationship to maintenance responsibility by any level of government.  
 Address: OKLAHOMA DEPARTMENT OF TRANSPORTATION  
 REPRODUCTION BRANCH Phone (405) 521-2586  
 200 N.E. 21st STREET  
 OKLAHOMA CITY, OKLAHOMA 73103-3204

SHEET 1

SHEET 2 OF 2 SHEETS

ALL RIGHTS RESERVED

COMPUTER GENERATED