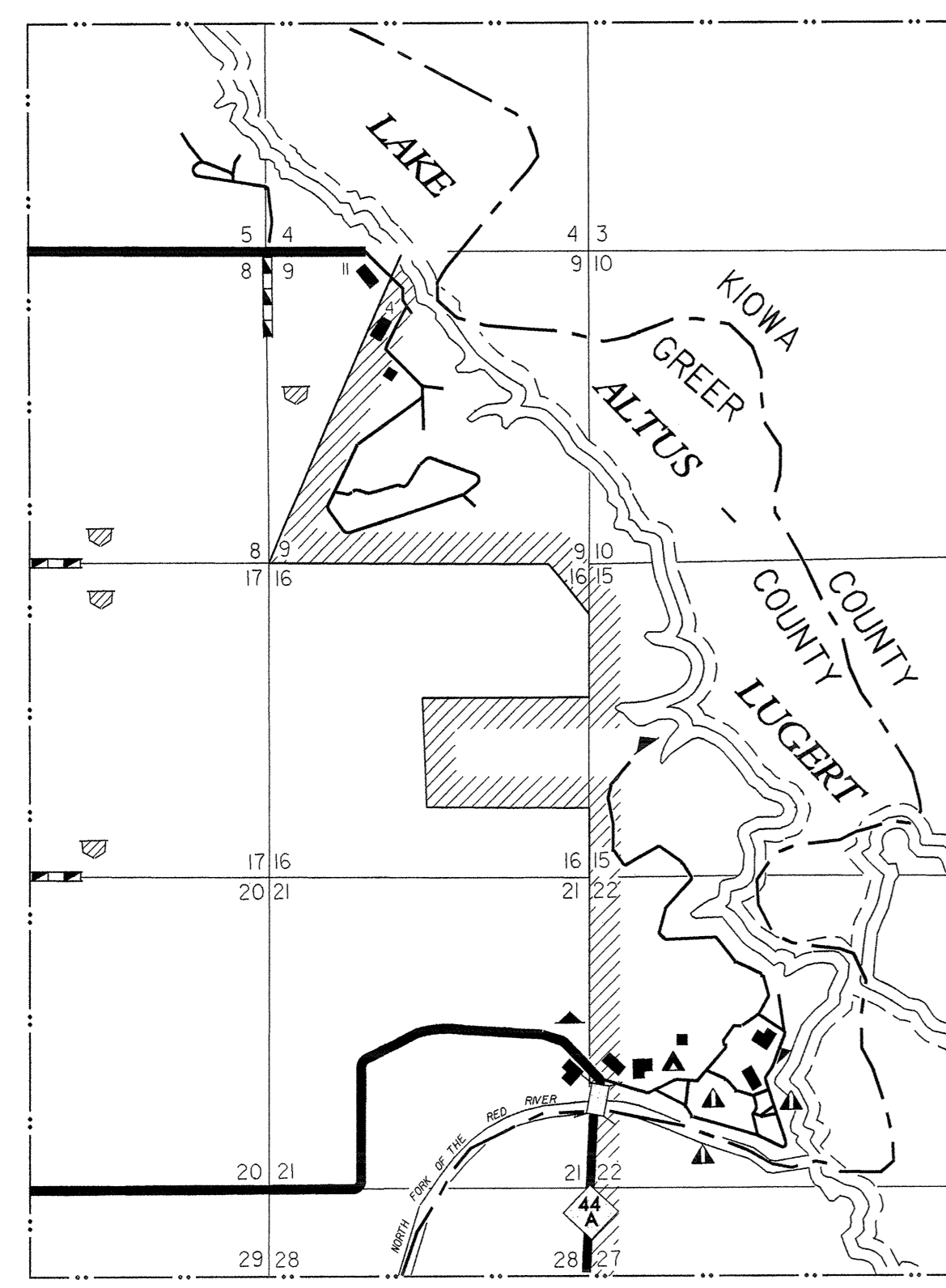
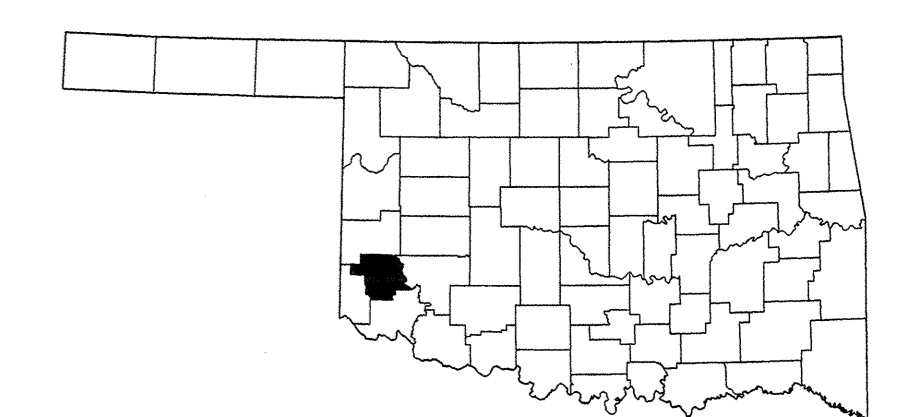


LEGEND

- U.S. NUMBERED HIGHWAY
- STATE NUMBERED HIGHWAY
- INTERSTATE HIGHWAY ROUTE
- PAVED ROAD
- GRAVEL ROAD
- UNIMPROVED ROAD
- PRIVATE ROAD
- PROJECTED ROAD
- RESURFACED ROAD
- COUNTY ROAD ID NO. N0001
- MILEAGE BETWEEN POINTS
- UNDIVIDED HIGHWAY, 4 OR MORE LANES
- UNDIVIDED HIGHWAY, 3 OR MORE LANES
- TRAFFIC CIRCLE
- HIGHWAY GRADE SEPARATION
- TRAFFIC INTERCHANGE
- STATE LINE
- COUNTY LINE
- CIVIL TOWNSHIP LINE
- SECTION LINE
- RURAL SETBACK AREA
- GOVERNMENT PROPERTY LINE
- MATCH LINE
- COUNTY SEAT
- TOWN CENTER
- COMPOSITE LINES
- CIVIL TOWNSHIP, ROAD IN PLACE
- INSET BOUNDARY
- ELEVATION ABOVE SEA LEVEL
- MOUNTAIN RANGE, BUTTE OR MESA
- SMALL MOUNTAIN
- MARSH OR SWAMP LANDS
- DRAINAGE DITCH
- IRRIGATION DITCH
- LAKE, RESERVOIR OR POND WITH DAM
- ROAD OVER DAM
- ROAD SUBJECT TO FLOOD
- SMALL BRIDGE, CLOSEST SPACED
- HIGHWAY BRIDGE, OVER 20FT IN LENGTH
- GENERAL BRIDGE, LONG CROSSING
- ARCH BRIDGE
- TRELS BRIDGE, WOOD, STEEL, CONCRETE
- CONCRETE DIP OR FORD
- FORD ROAD ESTABLISHED
- INTERMITTENT STREAM
- NARROW STREAM
- DOCK PIER OR LANDING
- NAVIGABLE STREAM WITH LOCK & DAM
- WIDE STREAM OR RIVER
- TRIANGULATION STATION
- RAILROAD, ANY NUMBER OF TRACKS
- RAILROAD WITH STATION INDICATED
- GRADE CROSSING
- UNDERPASS, E.R. ABOVE
- OVERPASS, A.R. BELOW
- AIRFIELD ON STREET
- AIRFIELD
- AIRPORT WITH COMPLETE FACILITIES
- AIRPORT WITH LIMITED FACILITIES
- LANDING STRIP, PRIVATE FIELD
- AIRPORT, GENERAL OUTLINE OF FIELD
- AIRFIELD, SHOWN IN POSITION
- ROADSIDE PARK, Public Grounds
- PLAYGROUNDS
- BATHING BEACH OR SWIMMING POOL
- SCENIC SITE
- CAMP OR LODGE, Permanent with Buildings
- MOTEL
- CAMP OR LODGE, Temporary
- SMALL PARK
- GOLF COURSE OR COUNTRY CLUB
- OBSERVATION OR LOOKOUT TOWER
- CAMP SITE
- FISH HATCHERY
- GOLF COURSE OR COUNTRY CLUB
- ATHLETIC FIELD OR AMUSEMENT PARK
- FAIRGROUNDS, RACE COURSE
- DWELLING
- NUMBER OF DWELLINGS, CLOSELY SPACED
- COMBINED BUSINESS AND DWELLING
- POST OFFICE
- POST OFFICE COMBINATIONS
- SEASONAL DWELLINGS
- CHURCH OR OTHER RELIGIOUS BUILDING
- CEMETERY
- CHURCH WITH CEMETERY ADJACENT
- POST OFFICE
- HOSPITAL
- SMALL BUSINESS
- INDUSTRY
- SAW MILL
- MINE SHAFT OR DRIFT
- OIL OR GAS FIELD
- GAUGING OR PUMPING STATION
- WAREHOUSE
- QUARRY
- SCHOOL
- COMMUNITY HALL OR LODGE
- DRIVE-IN THEATER
- CORRECTIONAL INSTITUTION
- HIGHWAY GARAGE
- JUNK YARDS & SHIPYARDS, Automobiles
- 8-Stop Building, Material
- 2-Stop Building, Gas or Fuel, Automobiles
- 4-Stop Building, Gas or Fuel, Automobiles
- 6-Stop Building, Gas or Fuel, Automobiles
- WATER SUPPLY STAND PIPE
- POWER PLANT
- BOOSTER STATION
- POWER SUBSTATION
- TRACTION OR ROAD STATION
- MILITARY INSTALLATION



QUARTZ MOUNTAIN STATE PARK
 T 5 N R 20 W
 SCALE IN MILES
 0 1/4 1/2 1 MILE
 0 200 400 800 KILOMETER
 SCALE IN METERS

GENERAL HIGHWAY MAP GREER COUNTY OKLAHOMA

PREPARED BY THE
 OKLAHOMA DEPARTMENT OF TRANSPORTATION
 PLANNING DIVISION

IN COOPERATION WITH THE
 U.S. DEPARTMENT OF TRANSPORTATION
 FEDERAL HIGHWAY ADMINISTRATION

ALL DATA CURRENT TO
 DATE OF INVENTORY
 OCTOBER 2000
 ORIGINAL DRAFTING BY J.A.V. JANUARY 2002
 STATE SYSTEM REVISED TO JANUARY 2002

SCALE IN MILES
 0 1 2 3 4 5 MILES

SCALE IN KILOMETERS
 0 2 4 6 8 KILOMETERS

LAMBERT CONFORMAL CONIC PROJECTION U.S. & GEODETIC SURVEY DATA
 20,000 FOOT GRID, OKLAHOMA PLANE COORDINATE SYSTEM, SOUTH PROJECTION ZONE.
 POPULATION FIGURES BASED ON 2000 U.S. CENSUS
 CO. POP. 6,061

ALL RIGHTS RESERVED COMPUTER GENERATED

Copies of this map are available for public use at nominal cost. This map indicates those roads known to the Department to be open to public travel. Placement of a road on the map has no relationship to maintenance responsibility by any level of government.
 Address:
 OKLAHOMA DEPARTMENT OF TRANSPORTATION
 REPRODUCTION BRANCH Phone (405) 521-2586
 200 N.E. 21st STREET
 OKLAHOMA CITY, OKLAHOMA 73105-3204

NOT FOR RESALE