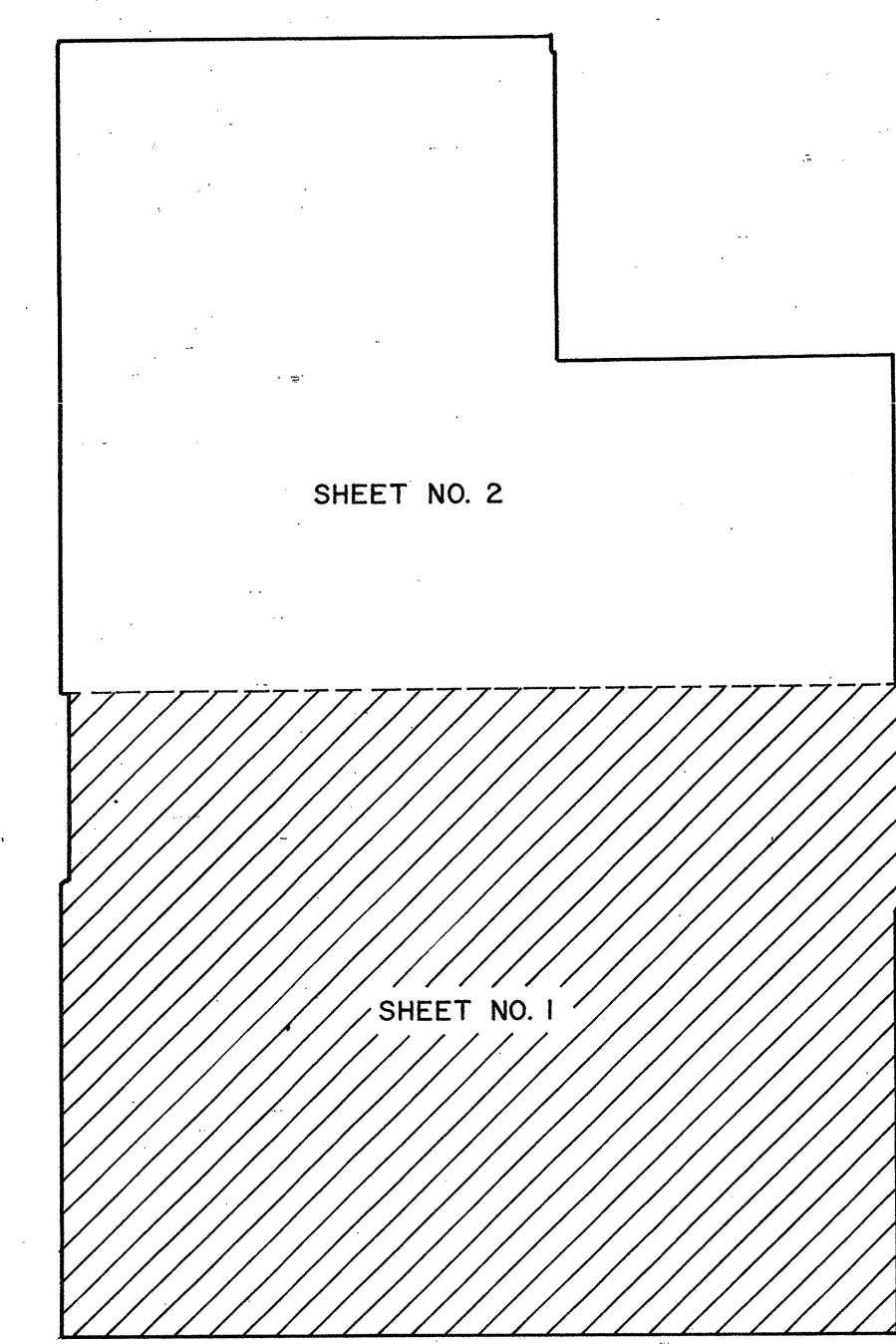


- LEGEND**
- U.S. NUMBERED HIGHWAY
  - STATE NUMBERED HIGHWAY
  - INTERSTATE HIGHWAY ROUTE
  - PAVED ROAD
  - GRAVEL ROAD
  - GRADED & DRAINAGE ROAD
  - UNIMPROVED ROAD
  - PRIMITIVE ROAD
  - PROJECTED ROAD
  - RESIDENTIAL ROAD
  - COUNTY ROAD ID NO.
  - MILEAGE BETWEEN POINTS
  - DIVIDED HIGHWAY, 4 OR MORE LANES
  - UNDIVIDED HIGHWAY, 3 OR MORE LANES
  - TRAFFIC CIRCLE
  - HIGHWAY GRADE SEPARATION
  - TRAFFIC INTERCHANGE
  - STATE LINE
  - COUNTY LINE
  - CIVIL TOWNSHIP LINE
  - SECTION LINE
  - RURAL DEVELOPMENT AREA
  - GOVERNMENT PROPERTY LINE
  - MATCH LINE
  - COUNTY SEAT
  - TOWN CENTER
  - CORPORATE LIMITS
  - CIVIL TOWNSHIP, ROAD IN PLACE
  - INSET BOUNDARY
  - ELEVATION ABOVE SEA LEVEL
  - MOUNTAIN RANGE, BUTTE OR MESA
  - REST HOME
  - SMALL MONUMENT
  - MARSH OR SWAMP LANDS
  - DRAINAGE DITCH
  - IRRIGATION DITCH
  - LAKE, RESERVOIR OR POND WITH DAM
  - ROAD OVER DAM
  - DRY LAKE SUBJECT TO FLOOD
  - SMALL BRIDGES CLOSELY SPACED
  - HIGHWAY BRIDGE OVER 20 FT. IN LENGTH
  - GENERAL BRIDGE, LONG CROSSING
  - ARCH BRIDGE
  - TRUSS BRIDGE, W-Wood, S-Steel, C-Concrete
  - CONCRETE OR FORD ROAD ESTABLISHED
  - FORD ROAD ESTABLISHED
  - INTERMITTENT STREAM
  - NARROW STREAM
  - DOCK PIER OR LANDING
  - NAVIGABLE STREAM WITH LOCK & DAM
  - WIDE STREAM OR RIVER
  - TRIANGULATION STATION
  - RAILROAD, ANY NUMBER OF TRACKS
  - RAILROAD WITH STATIONS INDICATED
  - GRADE CROSSING
  - UNDERPASS, R.R. ABOVE
  - OVERPASS, R.R. BELOW
  - RAILROAD ON STREET
  - MILITARY AIRFIELD
  - AIRPORT WITH COMPLETE FACILITIES
  - AIRPORT WITH LIMITED FACILITIES
  - LANDING STRIP, PRIVATE FIELD
  - AIRPORT, GENERAL OUTLINE OF FIELD
  - RUNWAYS SHOWN IN POSITION
  - BATHING BEACH OR SWIMMING POOL
  - SCENIC SITE
  - MOTEL
  - CAMP OR LODGE, Permanent With Buildings
  - SMALL PARK, SP-State, CP-County
  - MP-Municipal, TP-Trailer Park
  - FOREST RANGER STATION
  - OBSERVATION OR LOOKOUT TOWER
  - CAMP SITE
  - FISH HATCHERY
  - GOLF COURSE OR COUNTRY CLUB
  - ATHLETIC FIELD OR AMUSEMENT PARK
  - FAIRGROUNDS, RACE COURSE
  - DWELLING
  - NUMBER OF DWELLINGS CLOSELY SPACED
  - COMBINED BUSINESS AND DWELLING
  - POST OFFICE
  - POST OFFICE COMBINATIONS
  - SEASONAL DWELLINGS
  - CHURCH OR OTHER RELIGIOUS BUILDING
  - CEMETERY
  - CHURCH WITH CEMETERY ADJACENT
  - HOSPITAL
  - SMALL BUSINESS
  - INDUSTRY
  - SAW MILL
  - MINESHAFT OR DRIFT
  - OIL OR GAS FIELD
  - GAUGING OR PUMPING STATION
  - WAREHOUSE
  - GRAVEL PIT
  - CLUSTER
  - SCHOOL
  - COMMUNITY HALL OR LODGE
  - HISTORICAL MARKER
  - DRIVE-IN THEATER
  - CORRECTIONAL INSTITUTION
  - HIGHWAY GARAGE
  - JUNK YARDS & DUMPS, A-Automobile, B-Scrap Building Material, D-Refuse, Garbage or Train Dump
  - SEWAGE DISPOSAL PLANT
  - WATER SUPPLY STAND PIPE
  - POWER PLANT
  - BOOSTER STATION
  - POWER SUBSTATION
  - TELEVISION OR RADIO STATION
  - MILITARY INSTALLATION



**GENERAL HIGHWAY MAP  
CADDO COUNTY  
OKLAHOMA**

PREPARED BY THE  
**OKLAHOMA DEPARTMENT OF TRANSPORTATION  
PLANNING DIVISION**

IN COOPERATION WITH THE  
**U.S. DEPARTMENT OF TRANSPORTATION  
FEDERAL HIGHWAY ADMINISTRATION**

ALL DATA CURRENT TO  
DATE OF INVENTORY  
MAY, 1990

ORIGINAL DRAFTING BY L.R.K. DECEMBER 1991  
STATE SYSTEM REVISED TO JANUARY 1992

SCALE  
0 1 2 3 4 5 MILES

LAMBERT CONFORMAL CONIC PROJECTION U.S. & GEODETIC SURVEY DATA  
20,000 FOOT GRID, OKLAHOMA PLANE COORDINATE SYSTEM SOUTH PROJECTION ZONE  
POPULATION FIGURES BASED ON 1990 U.S. CENSUS  
CO. POP. 230,550

ALL RIGHTS RESERVED SHEET 1 OF 2 SHEETS

This map indicates those roads known to the Department to be open to public travel. Placement of a road on the map has no relationship to maintenance responsibility by any level of government.  
Copies of this map are available for public use at nominal cost.  
Address: OKLAHOMA DEPARTMENT OF TRANSPORTATION  
REPRODUCTION BRANCH Phone (405) 521-2588  
300 N.E. 21st, STREET  
OKLAHOMA CITY, OKLAHOMA 73105

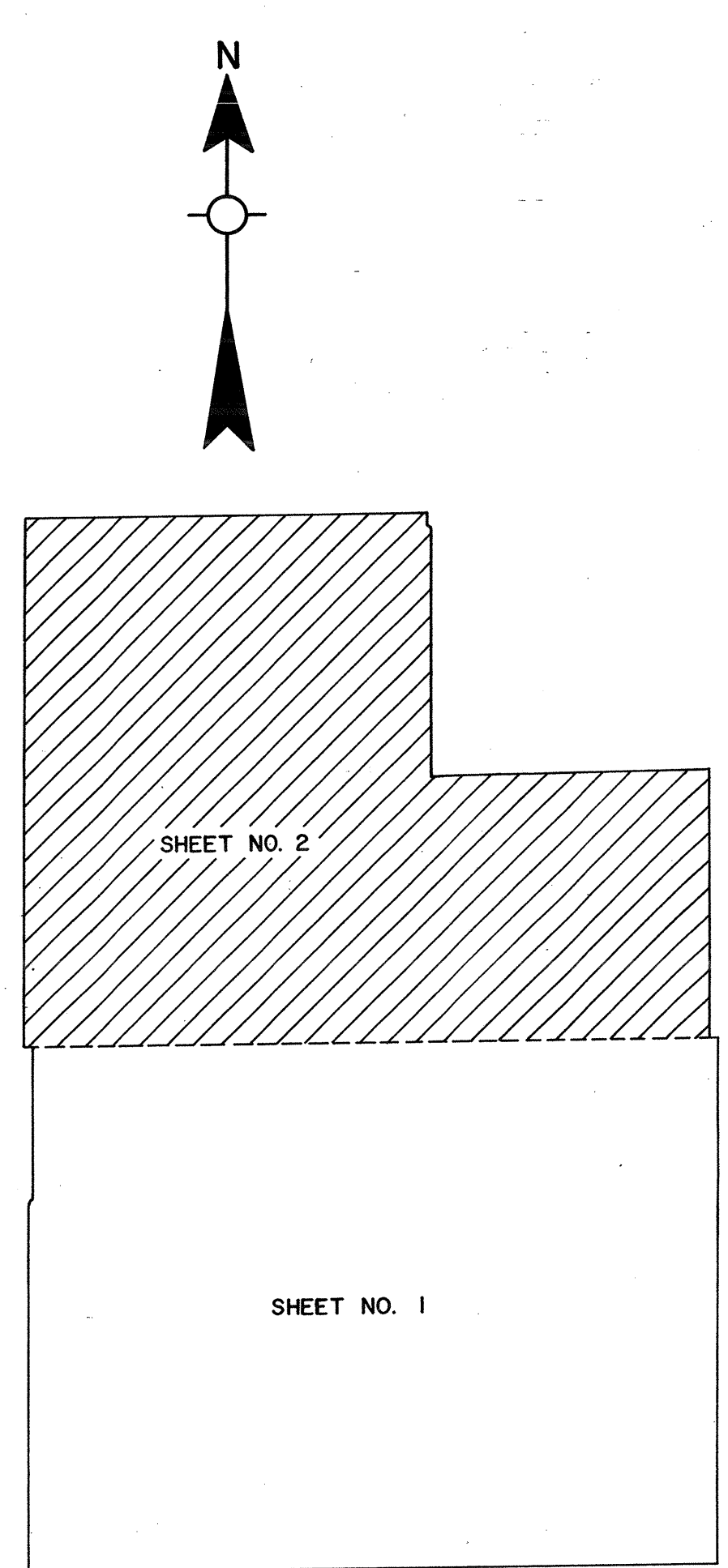
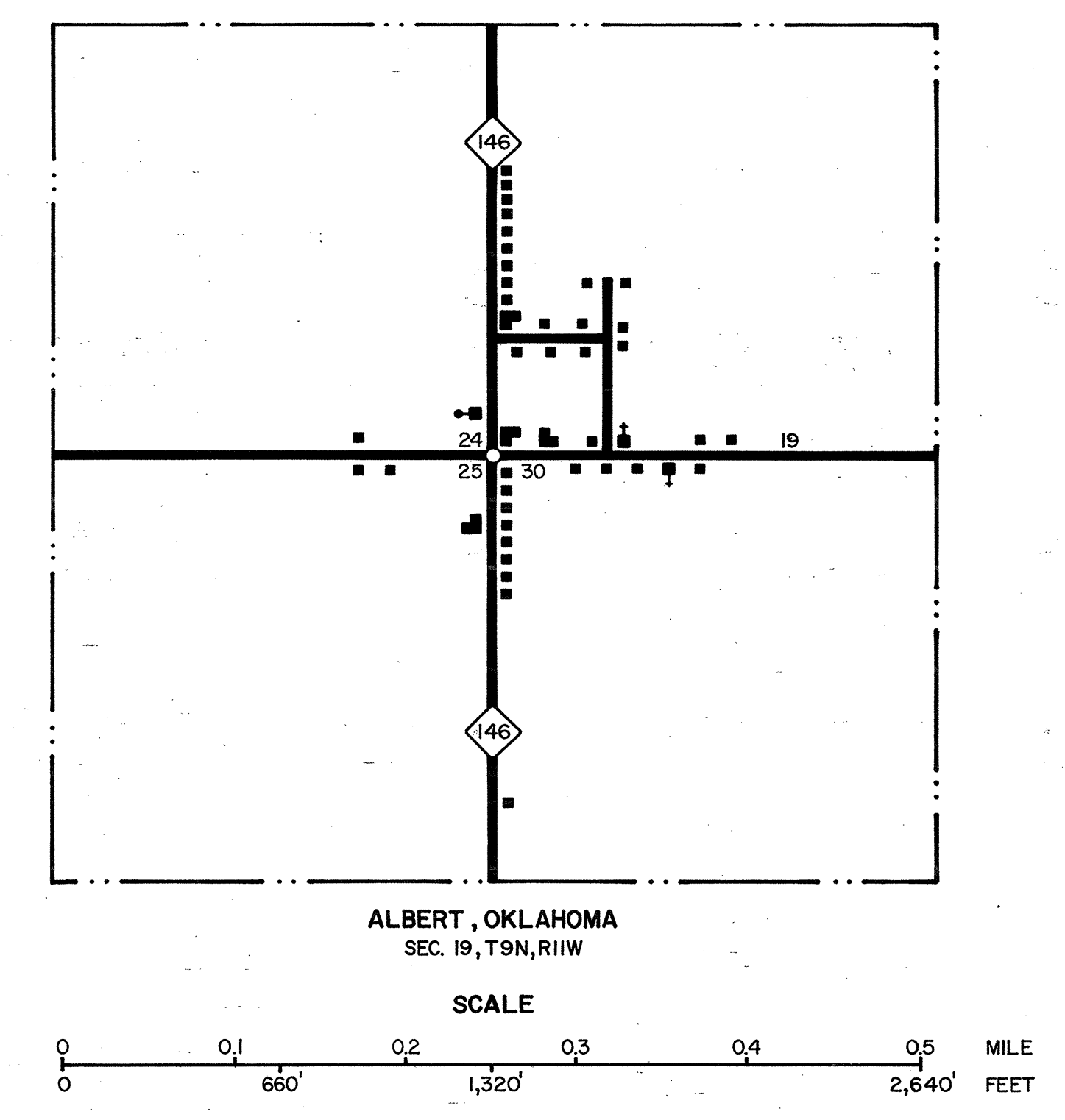
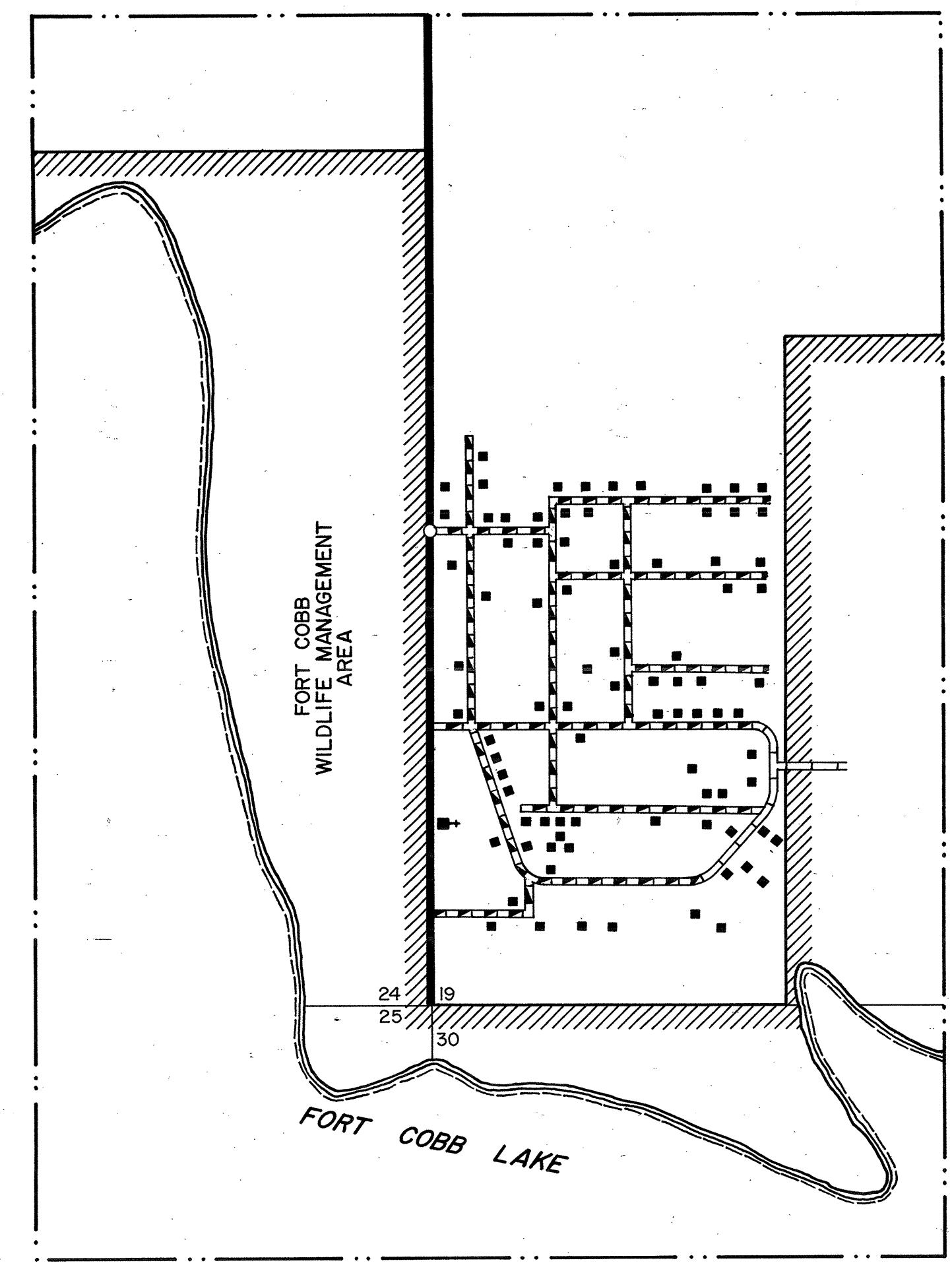
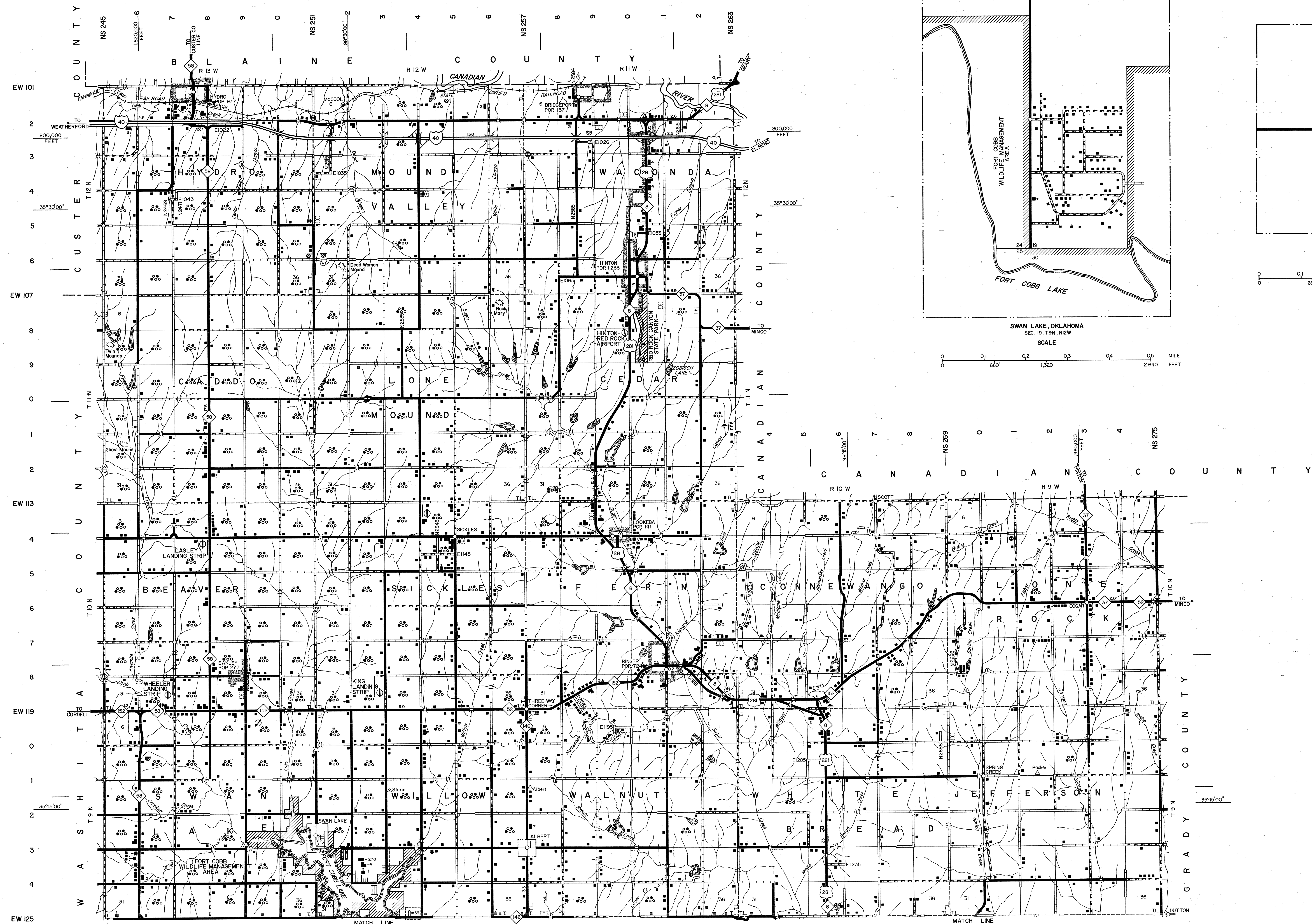
CADDO SHEET NO. 1

**NOT FOR RESALE**

GENERAL HIGHWAY MAP CADDO COUNTY OKLAHOMA

8





This map indicates those roads known to the Department to be open to public travel. Placement of a road on this map has no relationship to maintenance responsibility by any level of government.  
 Copies of this map are available for public use at nominal cost.  
 Address: OKLAHOMA DEPARTMENT OF TRANSPORTATION  
 REPRODUCTION BRANCH Phone (405) 521-2586  
 200 N.E. 21st STREET  
 OKLAHOMA CITY, OKLAHOMA 73105