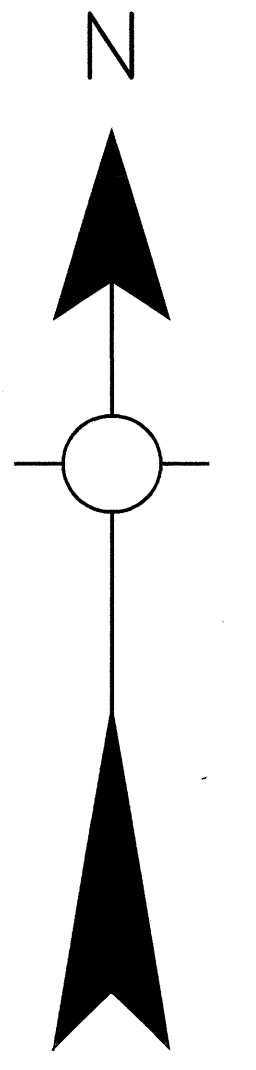
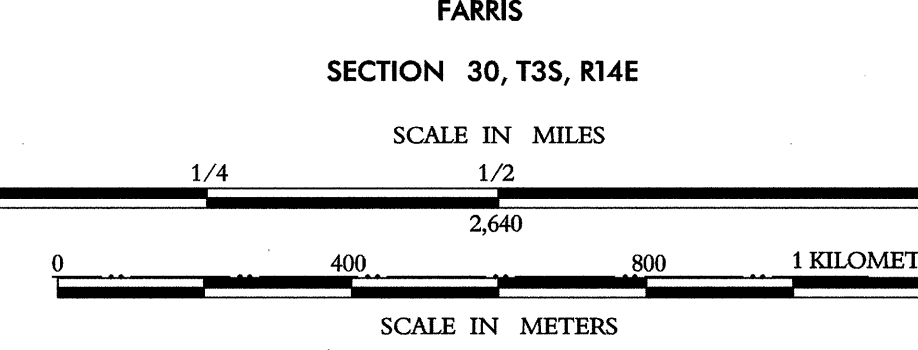
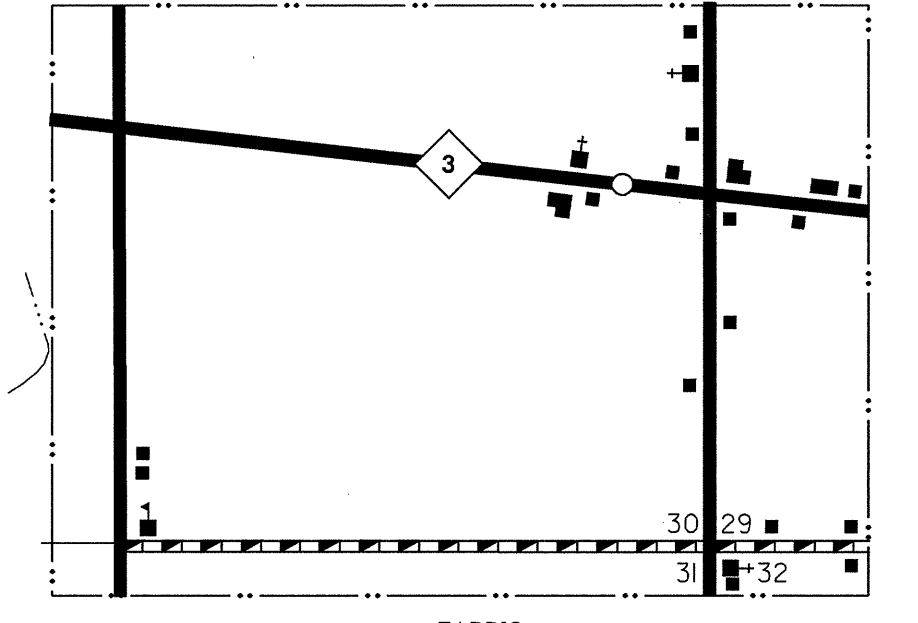
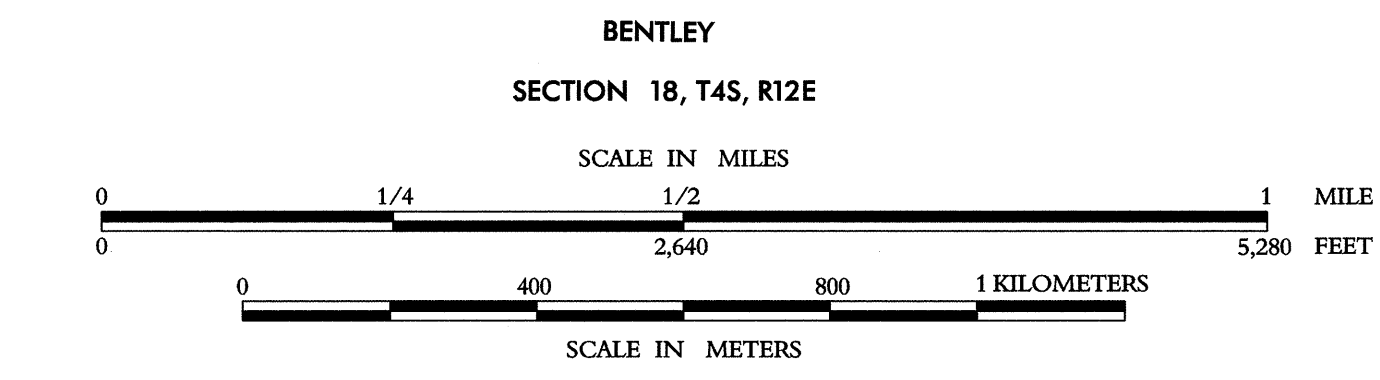
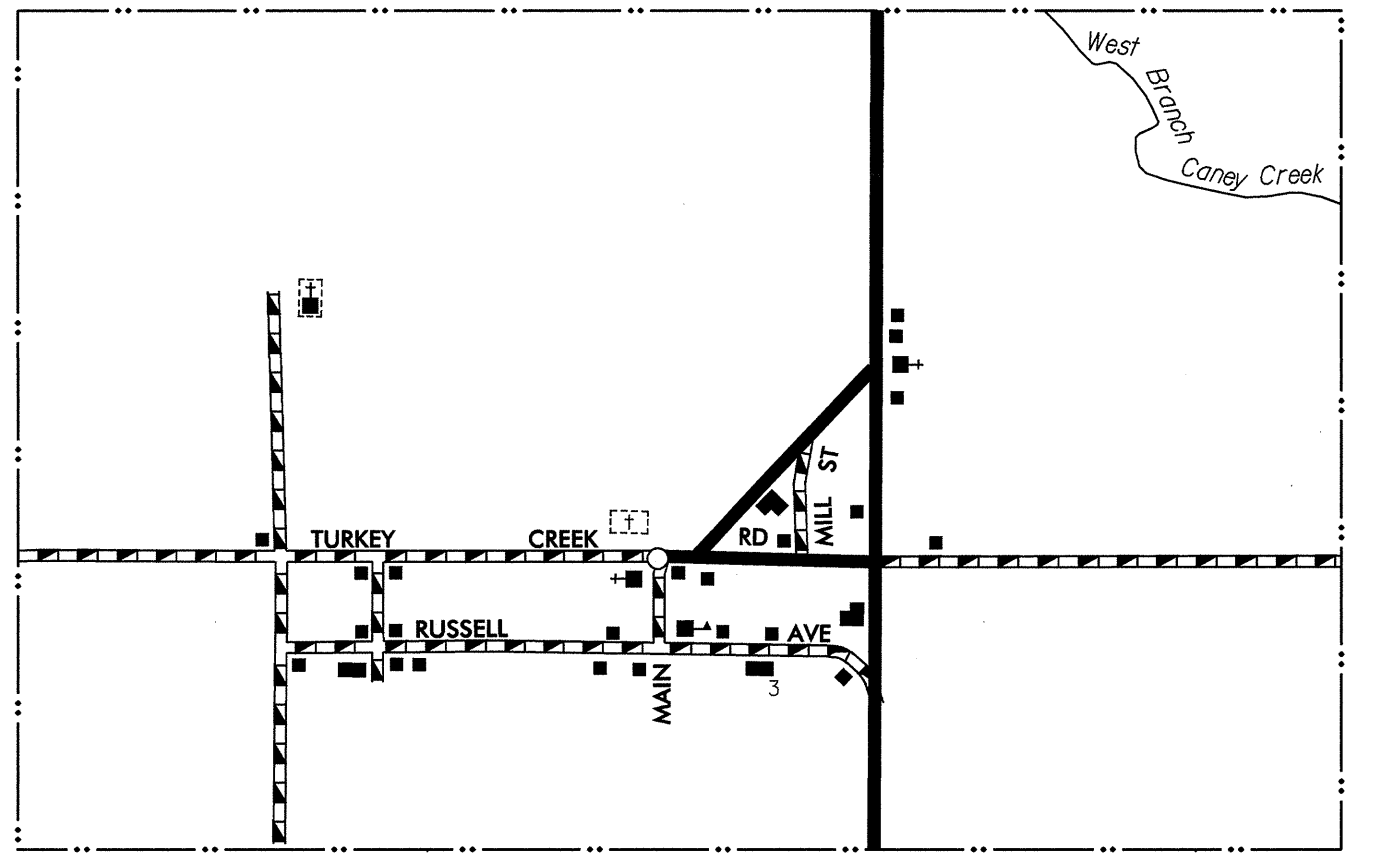
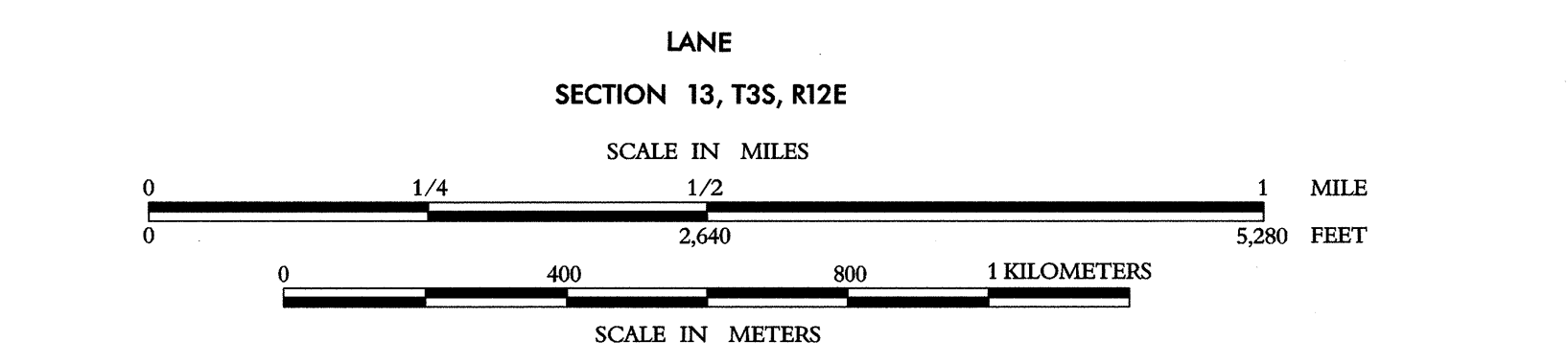
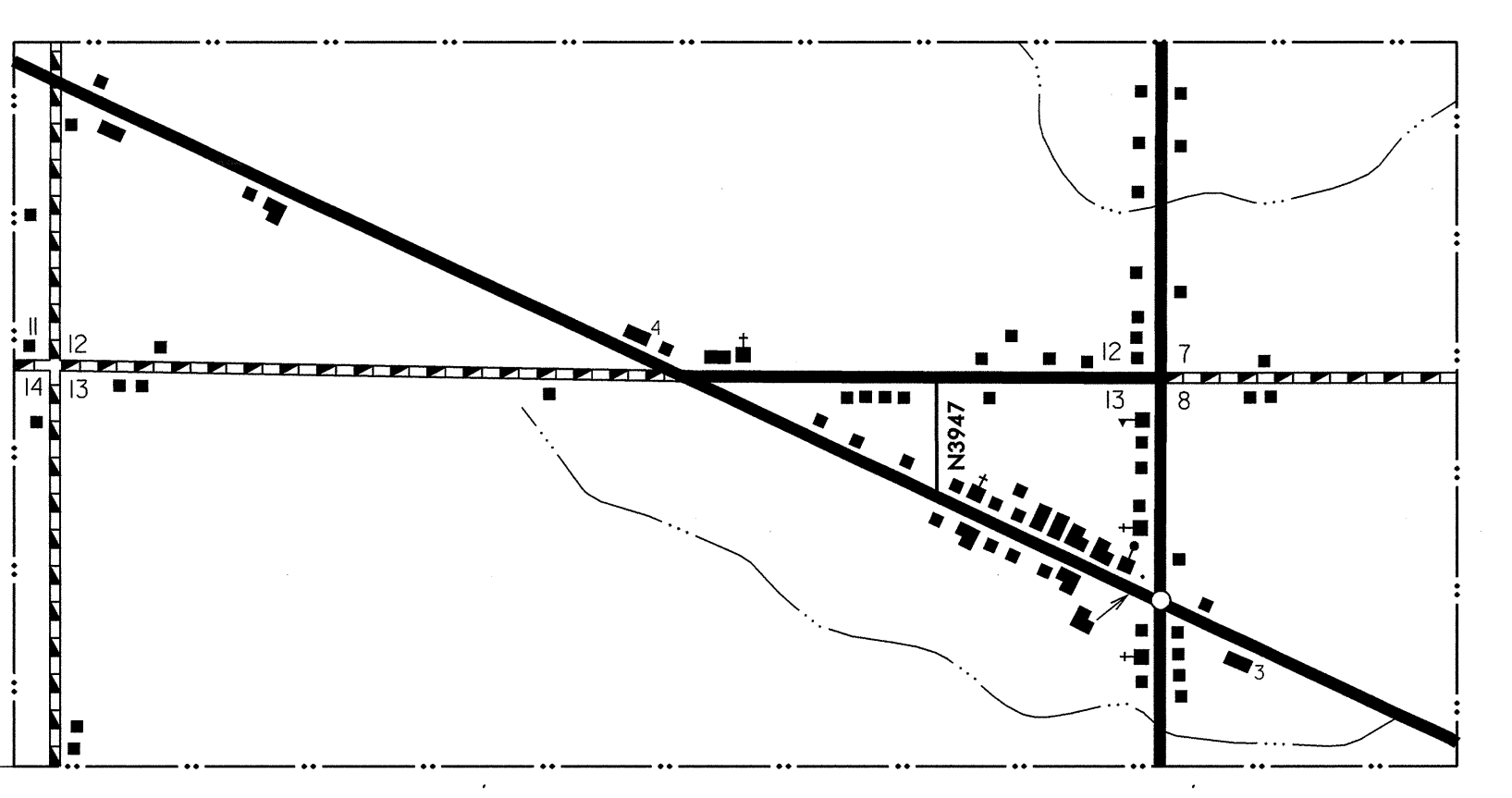
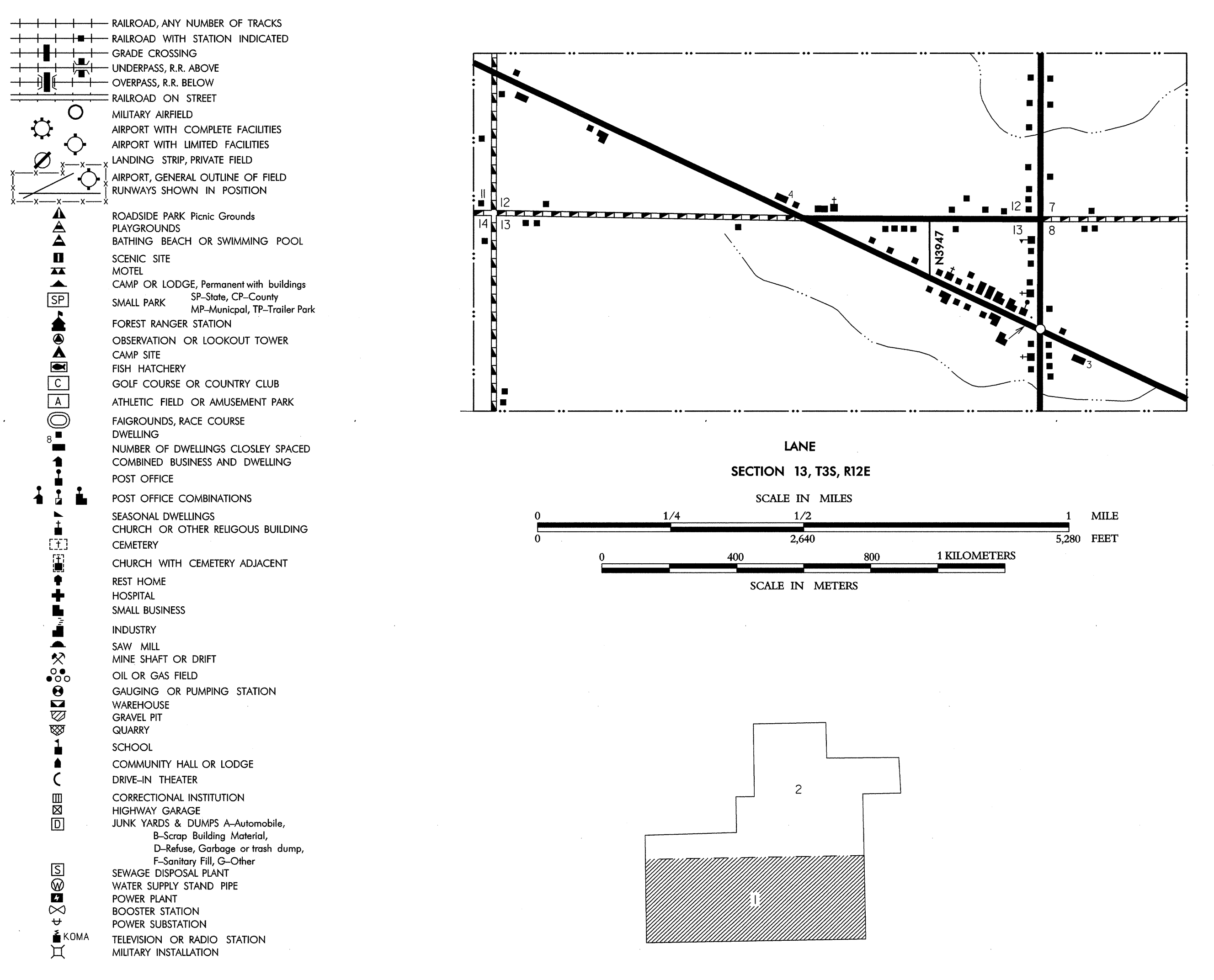


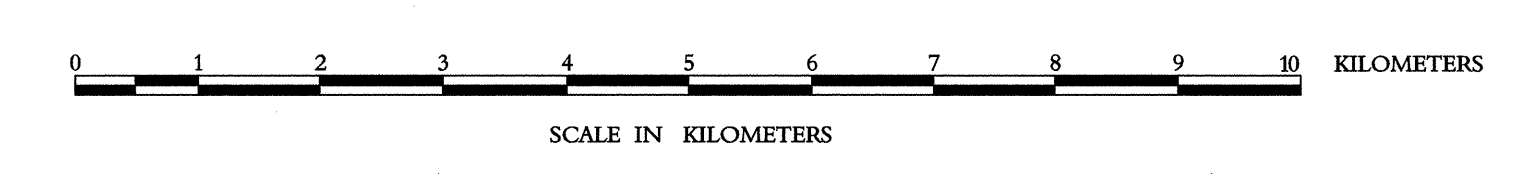
LEGEND



**GENERAL HIGHWAY MAP
ATOKA COUNTY
OKLAHOMA**

PREPARED BY THE
OKLAHOMA DEPARTMENT OF TRANSPORTATION
PLANNING DIVISION

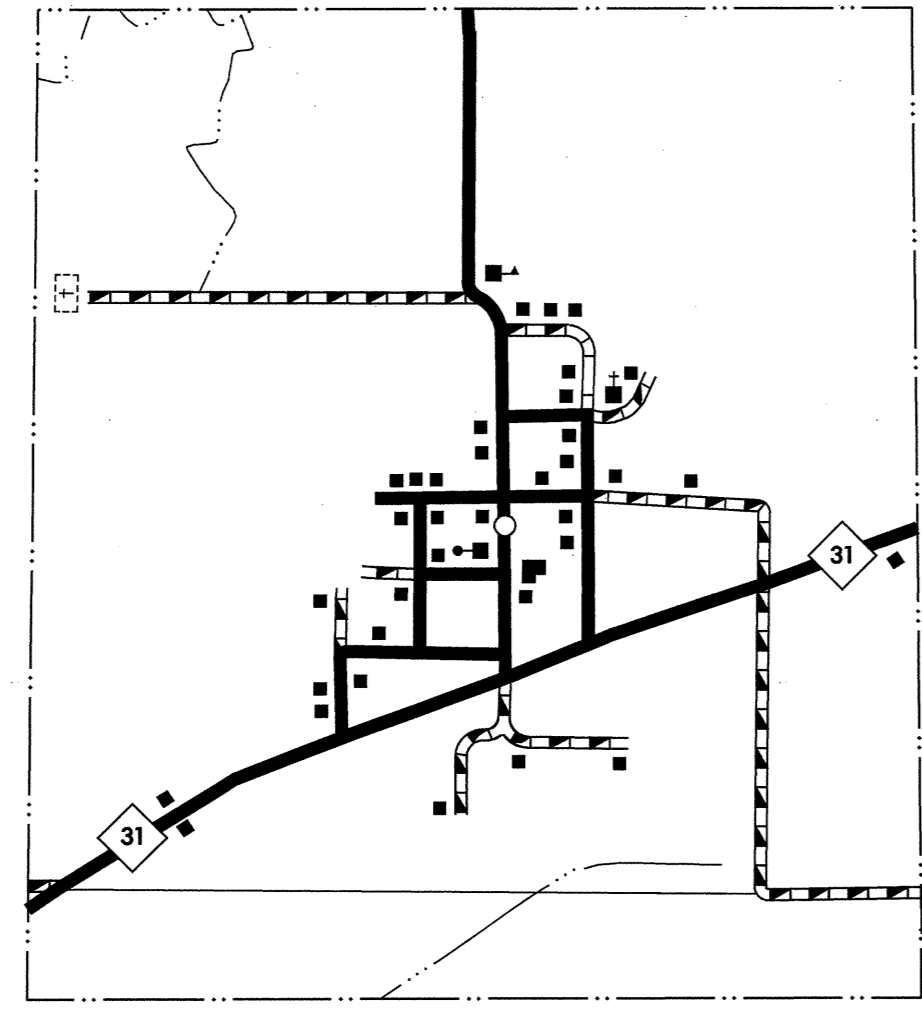
IN COOPERATION WITH THE
U.S. DEPARTMENT OF TRANSPORTATION
FEDERAL HIGHWAY ADMINISTRATION



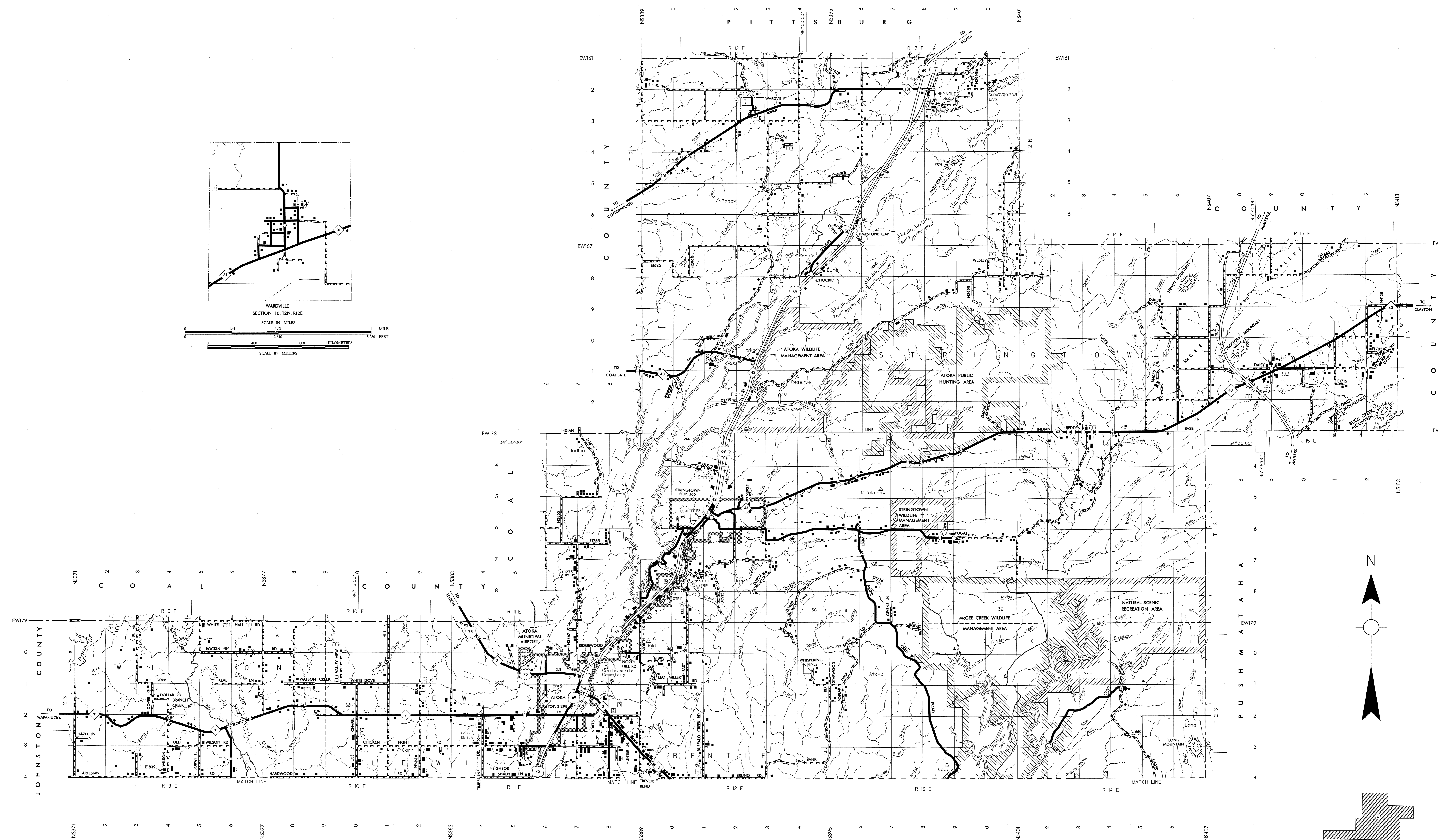
Copies of this map are available for public use at nominal cost. This map indicates those roads known to the Department to be open to public travel. Placement of a road on the map has no relationship to reproduction. BRANCH Phone (405) 521-2586 200 N.E. 21st STREET OKLAHOMA CITY, OKLAHOMA 73105-3204

ALL RIGHTS RESERVED SHEET 1 OF 2 SHEETS COMPUTER GENERATED

NOT FOR RESALE



WARDVILLE
SECTION 10, T2N, R12E
SCALE IN MILES
SCALE IN METERS



Copies of this map are available for public use at nominal cost.
Address: OKLAHOMA DEPARTMENT OF TRANSPORTATION
REPRODUCTION BRANCH Phone (405) 521-2266
200 N.E. 21st STREET
OKLAHOMA CITY, OKLAHOMA 73105-3204

This map indicates those roads known to the Department to be open to public travel. Placement of a road on the map has no relationship to maintenance responsibility by any level of government.

ALL RIGHTS RESERVED SHEET 2 OF 2 SHEETS COMPUTER GENERATED

NOT FOR RESALE